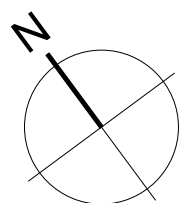
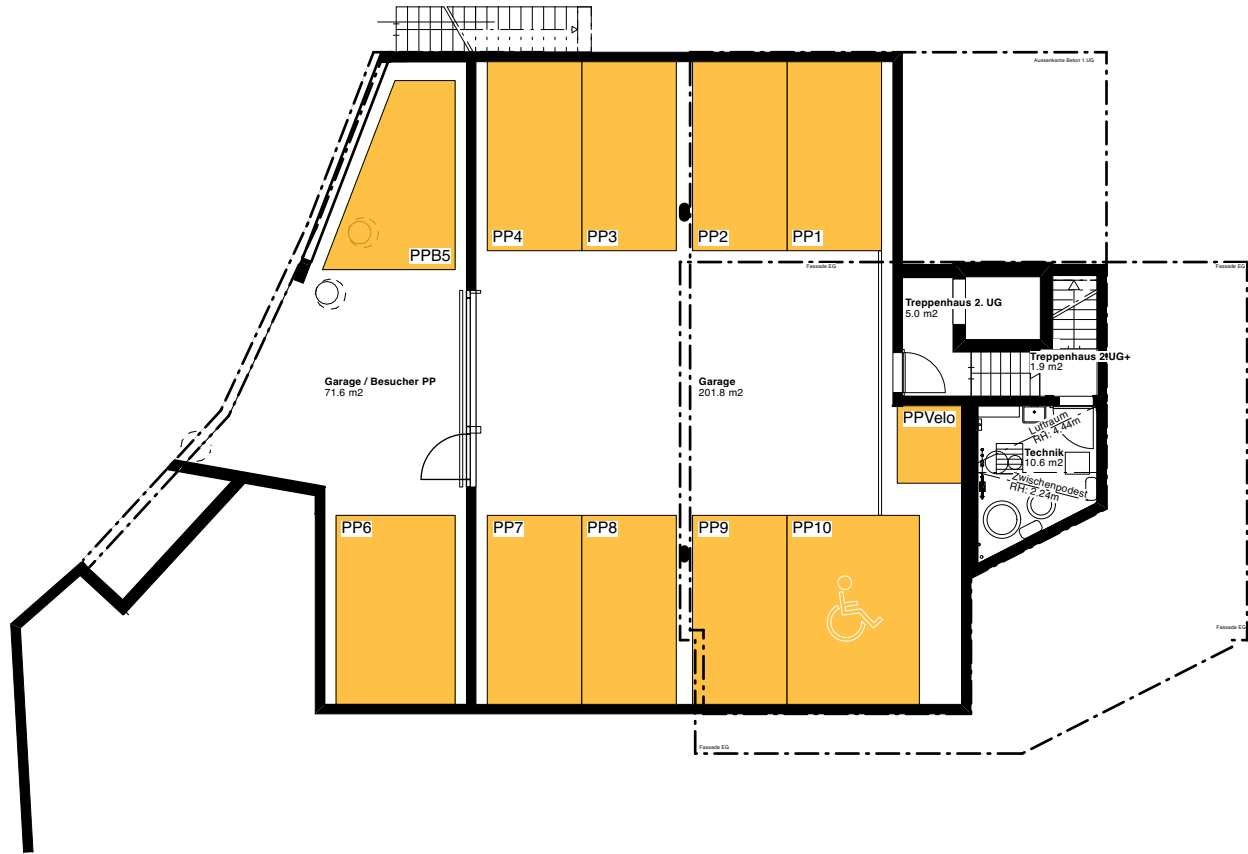
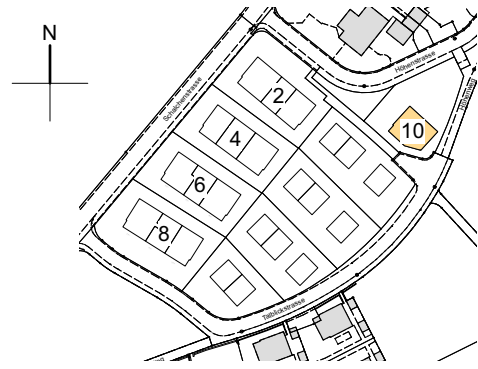


Überbauung Talblick  
Höhenstrasse 10A - 10D  
8492 Wila  
2. Untergeschoss  
1:200

Stand: 14.03.2024

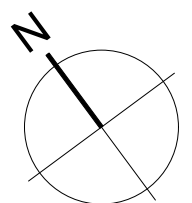
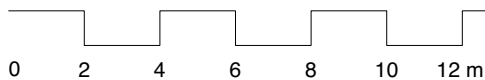
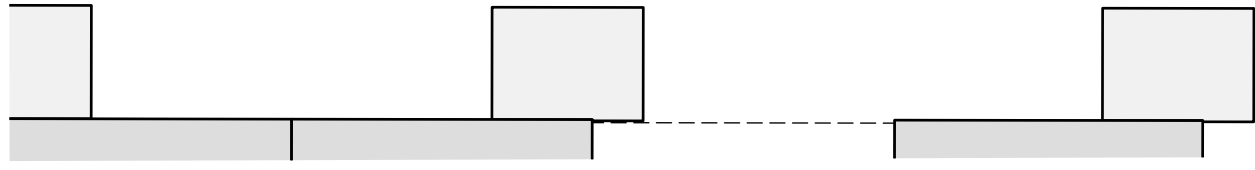
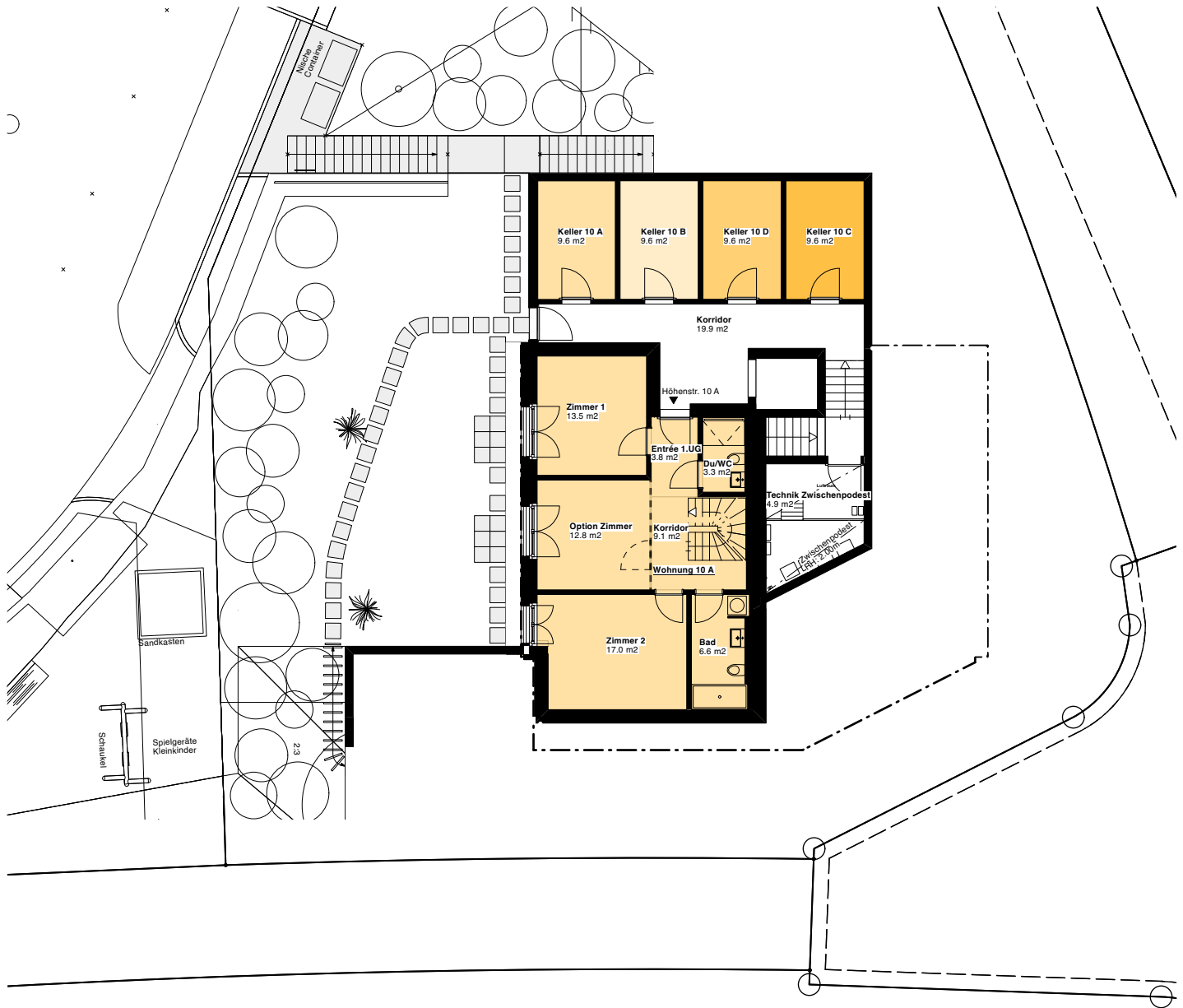
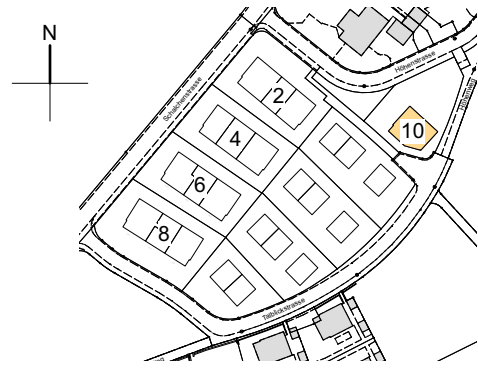
Änderungen vorbehalten



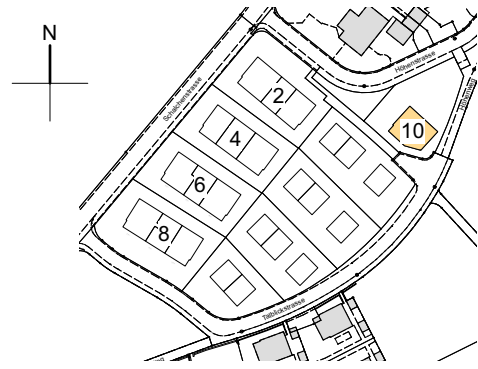
Überbauung Talblick  
 Höhenstrasse 10A - 10D  
 8492 Wila  
 1. Untergeschoss  
 1:200

Stand: 14.03.2024

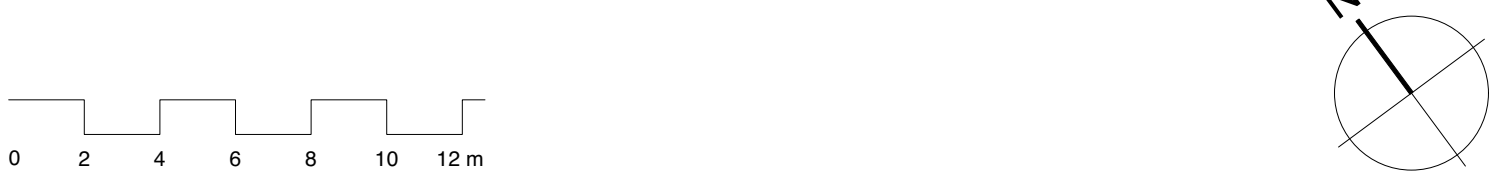
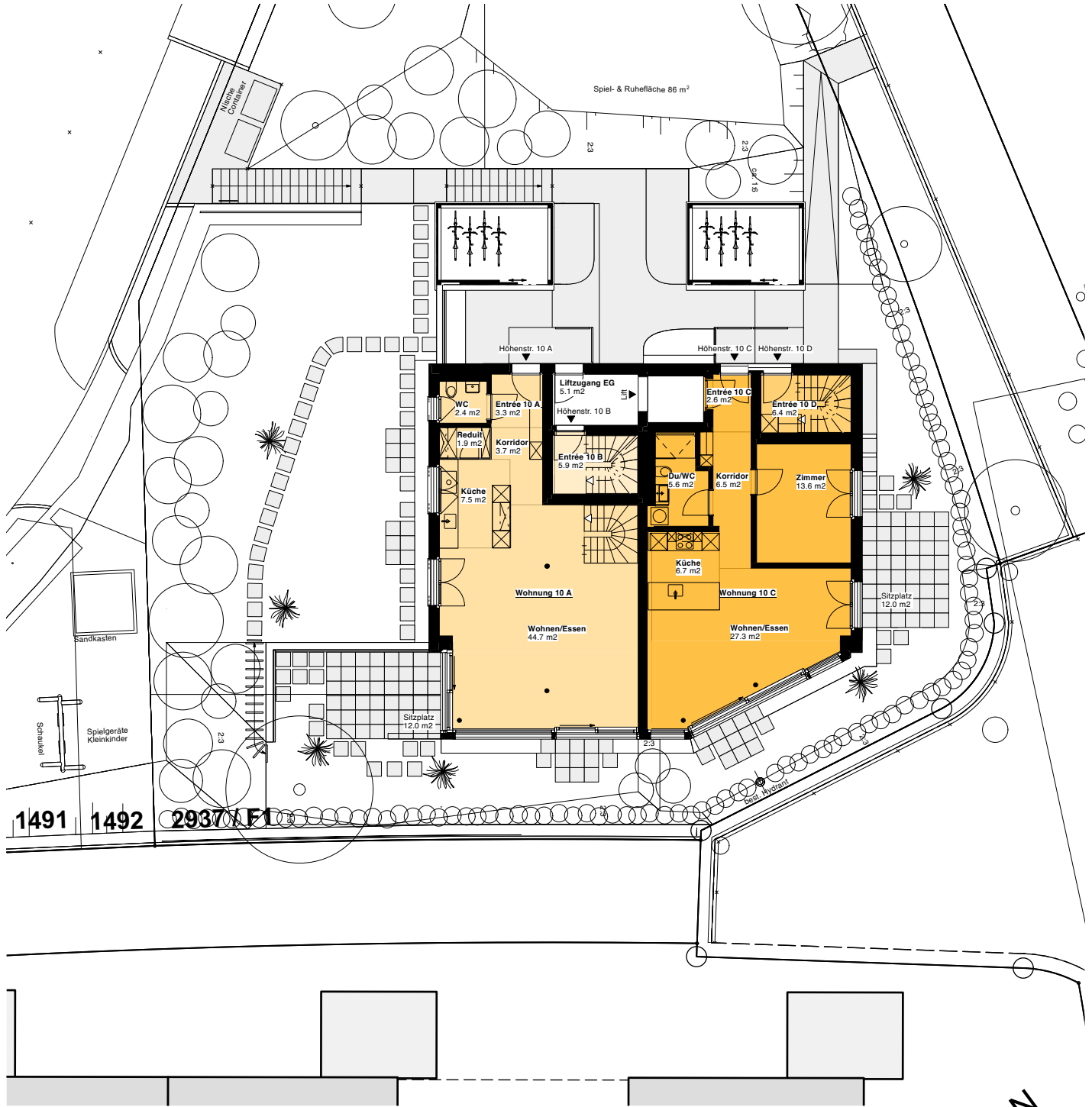
Änderungen vorbehalten



Überbauung Talblick  
 Höhenstrasse 10A - 10D  
 8492 Wila  
 Erdgeschoss  
 1:200



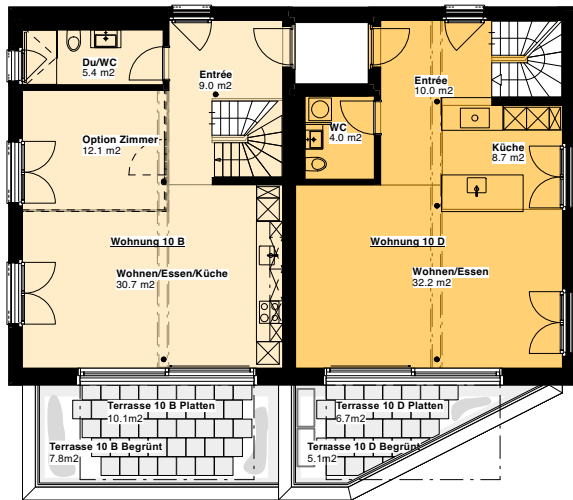
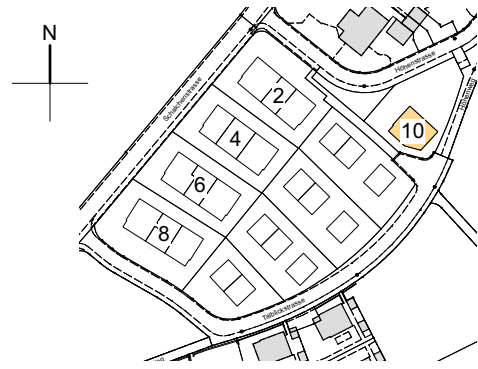
Stand: 14.03.2024  
 Änderungen vorbehalten



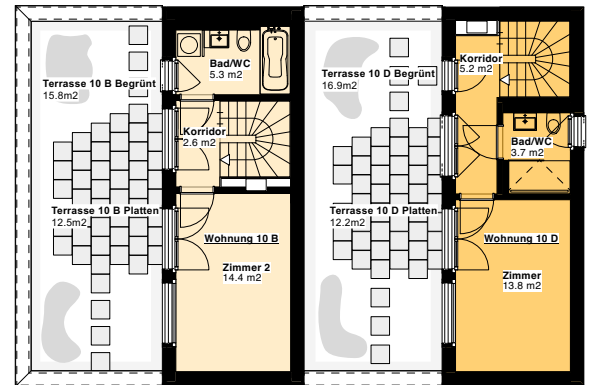
Überbauung Talblick  
 Höhenstrasse 10A - 10D  
 8492 Wila  
 Obergeschoss / Dachgeschoss  
 1:200

Stand: 14.03.2024

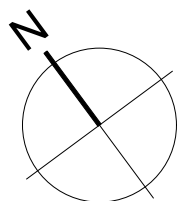
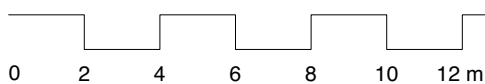
Änderungen vorbehalten



Obergeschoss



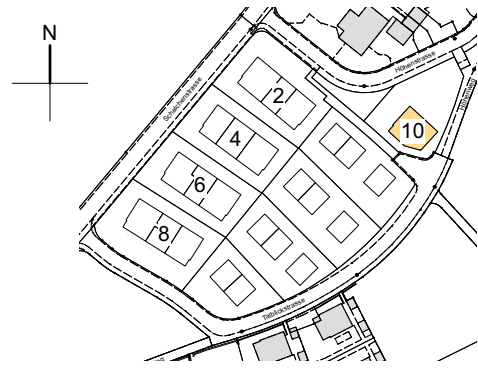
Dachgeschoss



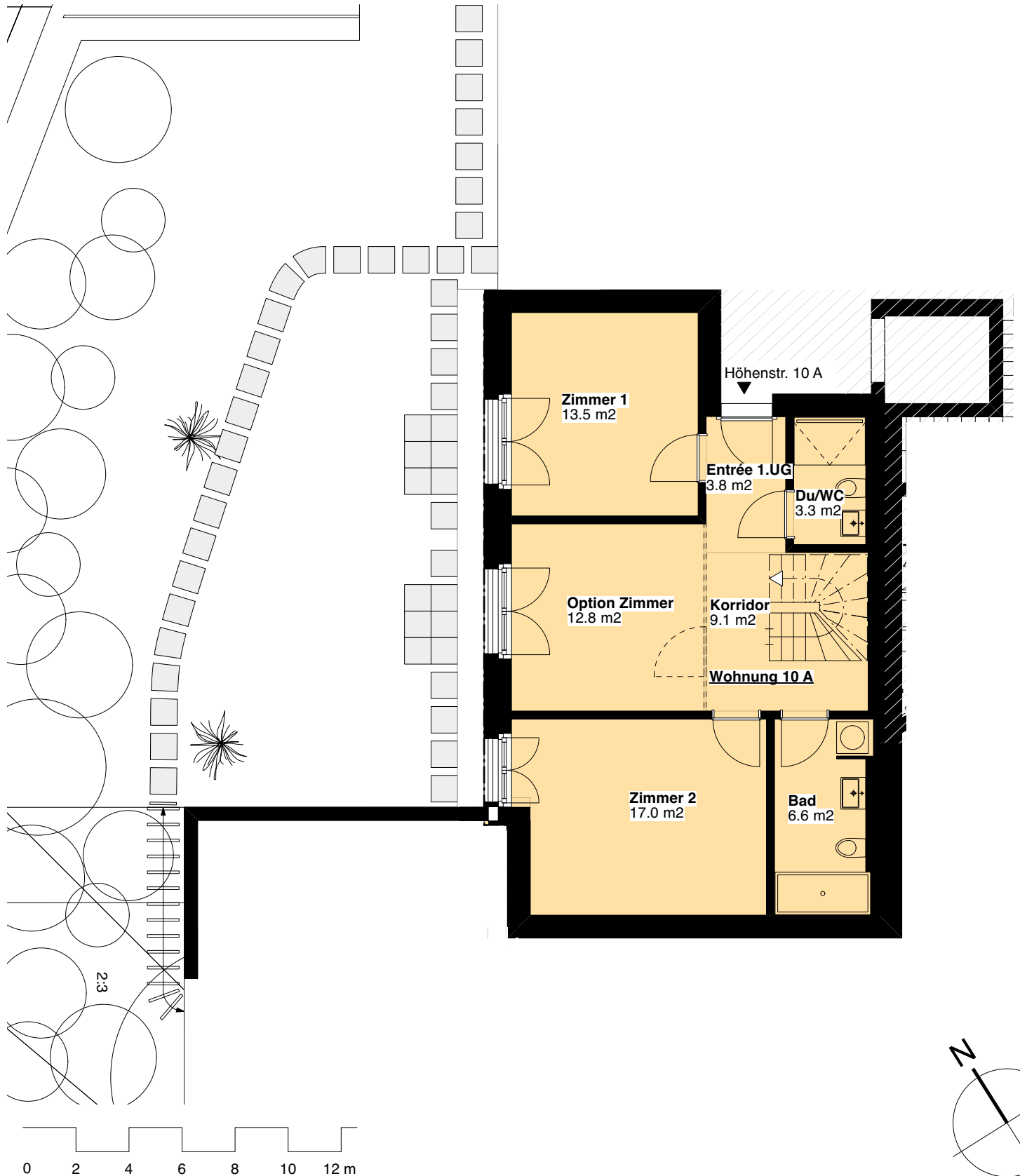
Überbauung Talblick  
Höhenstrasse 10A, 3.5-4.5 Zimmer  
8492 Wila  
1.Untergeschoss  
Fläche Total: 129.6m<sup>2</sup>  
1:100

Stand: 14.03.2024

Änderungen vorbehalten



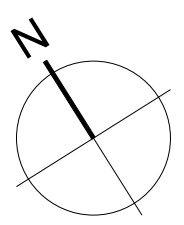
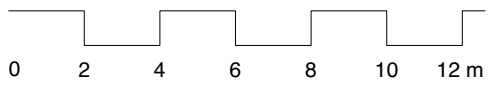
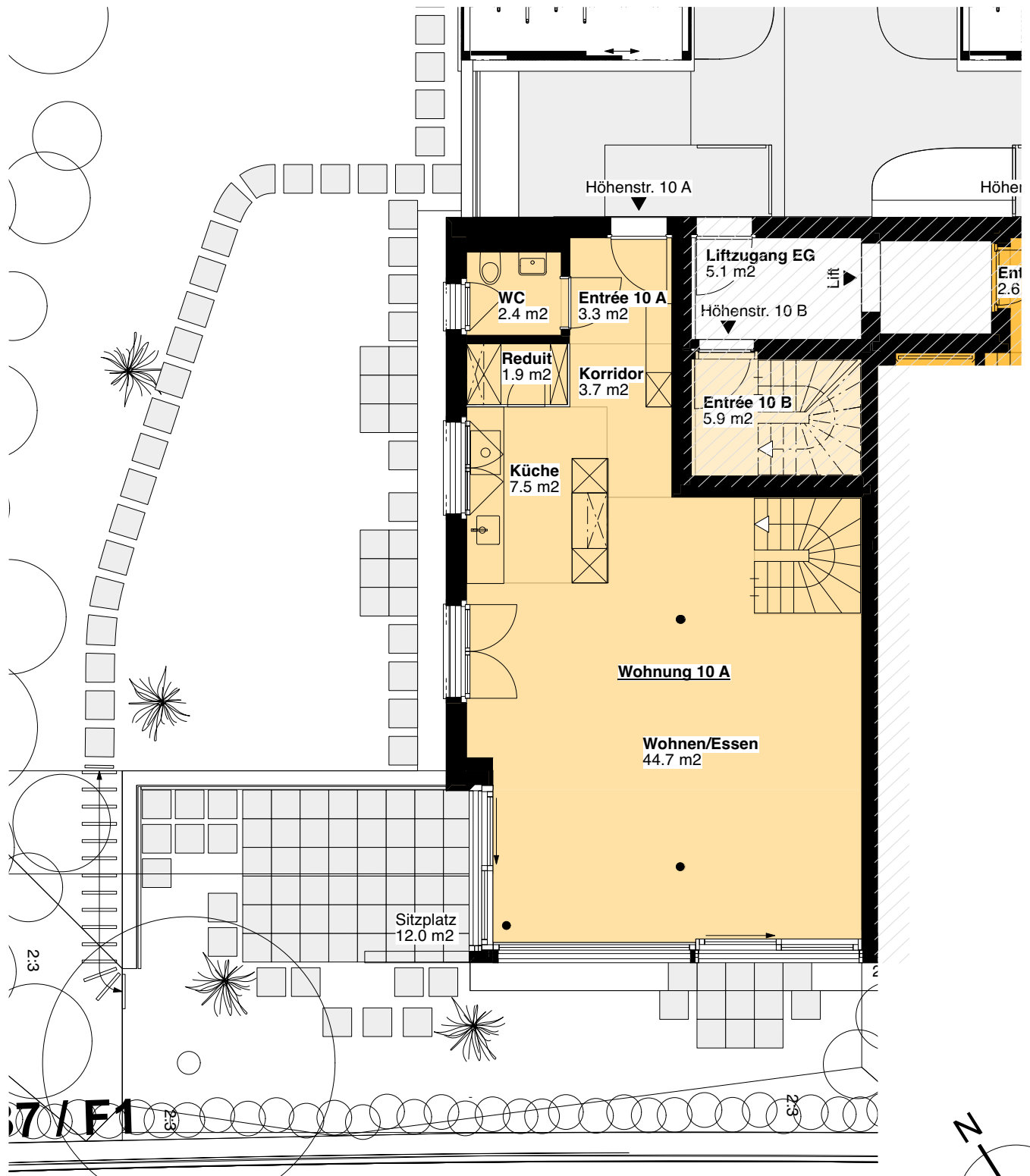
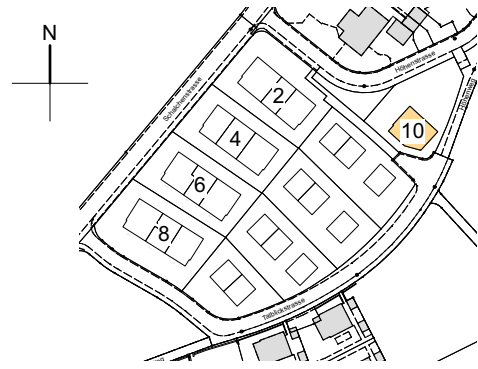
Architektengruppe  
4



Überbauung Talblick  
 Höhenstrasse 10A, 3.5-4.5 Zimmer  
 8492 Wila  
 Erdgeschoss  
 Fläche Total: 129.6m<sup>2</sup>  
 1:100

Stand: 14.03.2024

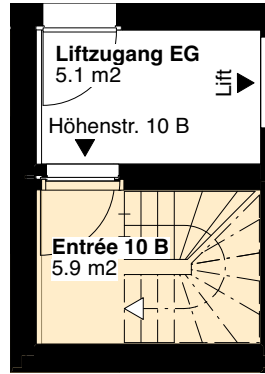
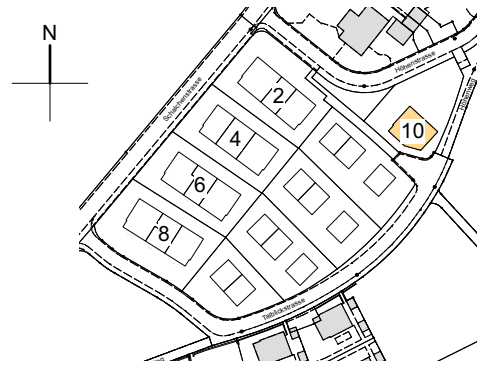
Änderungen vorbehalten



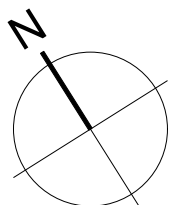
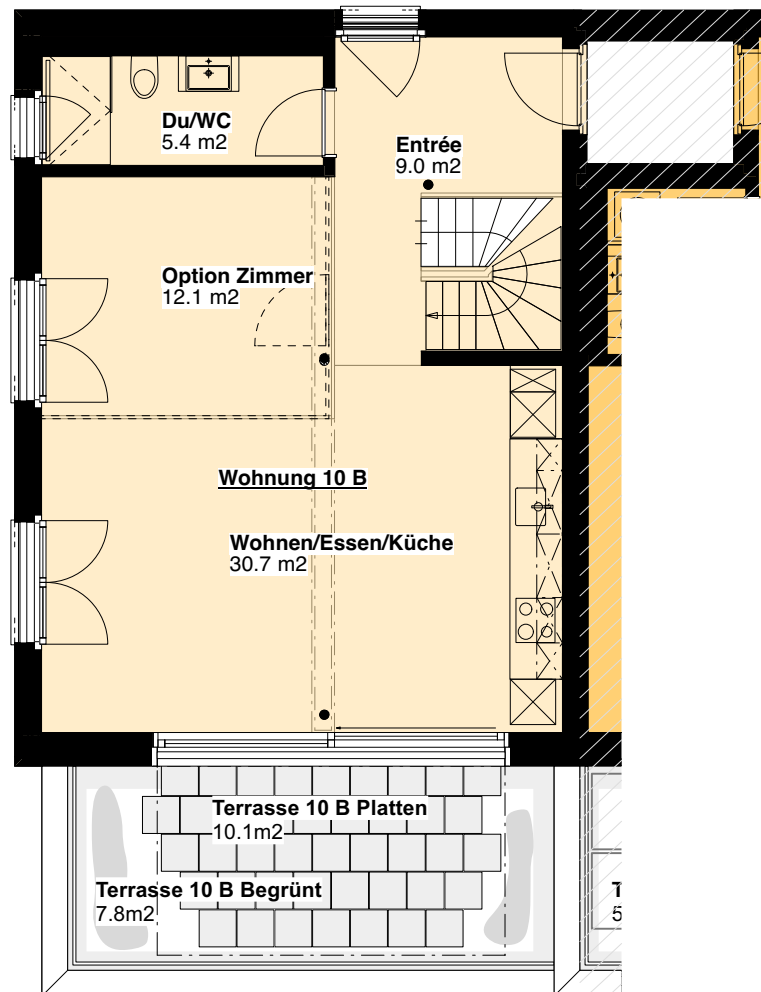
Überbauung Talblick  
Höhenstrasse 10B, 2.5-3.5 Zimmer  
8492 Wila  
Obergeschoss  
Fläche Total: 85.4m<sup>2</sup>  
1:100

Stand: 14.03.2024

Änderungen vorbehalten



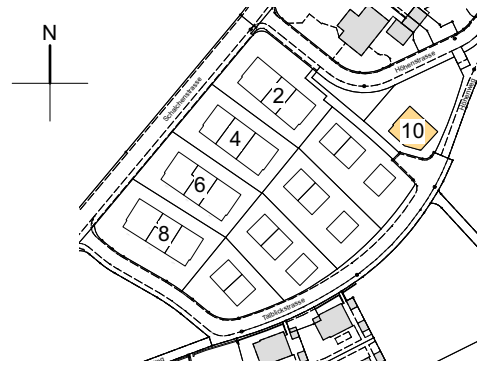
Eingang



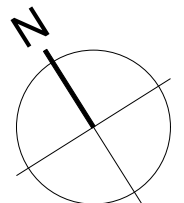
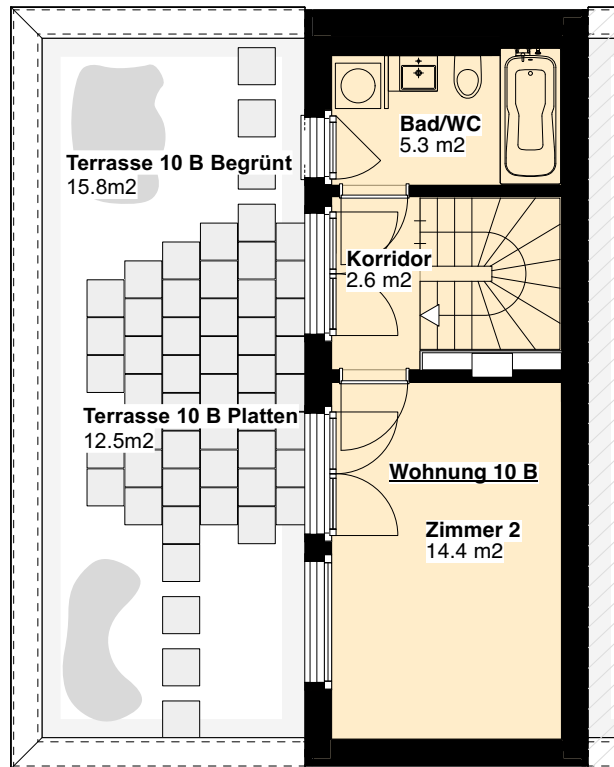
Überbauung Talblick  
Höhenstrasse 10B, 2.5-3.5 Zimmer  
8492 Wila  
Dachgeschoss  
Fläche Total: 85.4m<sup>2</sup>  
1:100

Stand: 14.03.2024

Änderungen vorbehalten



Architektengruppe  
4

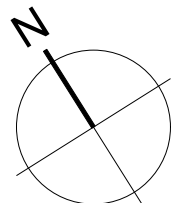
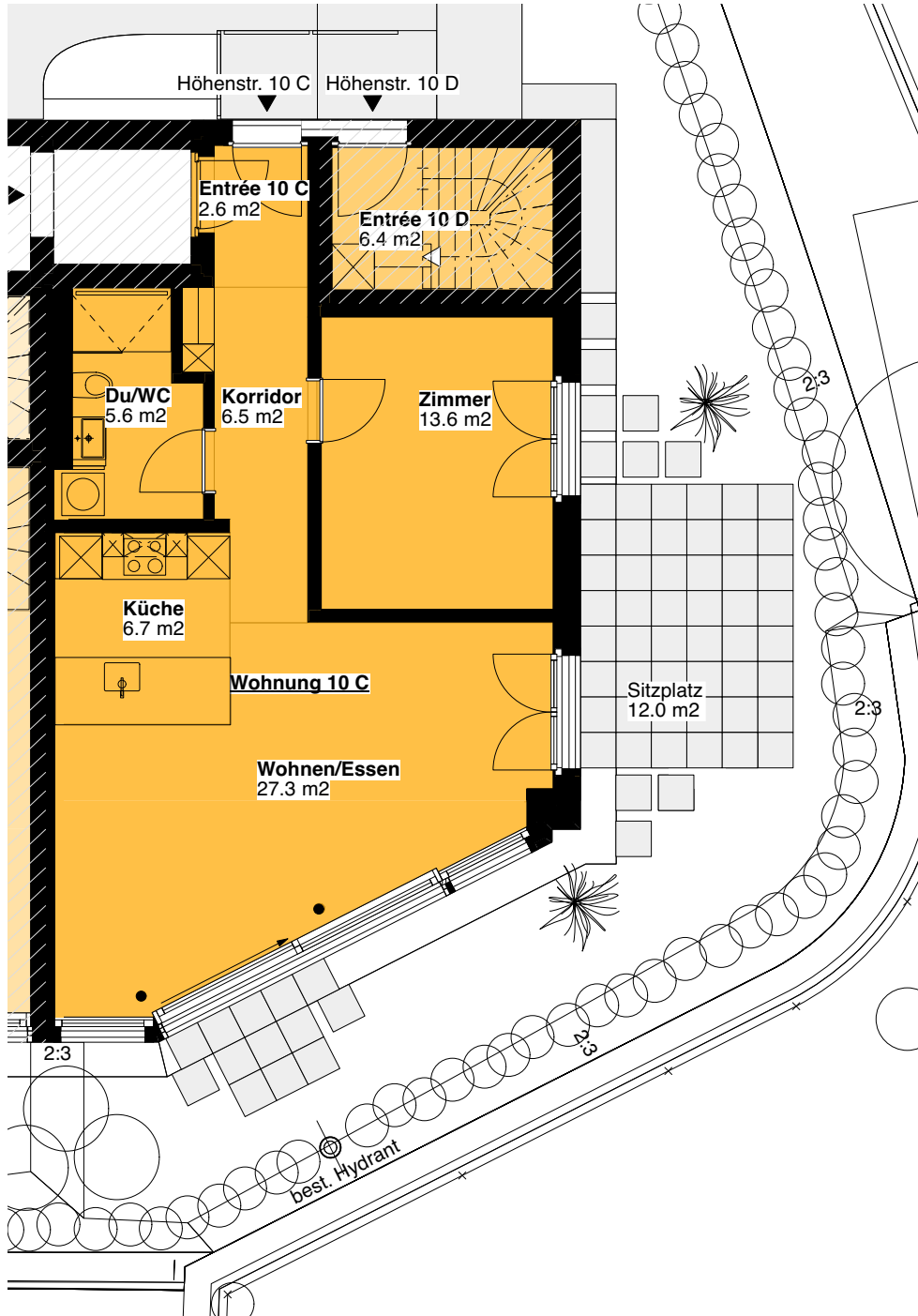
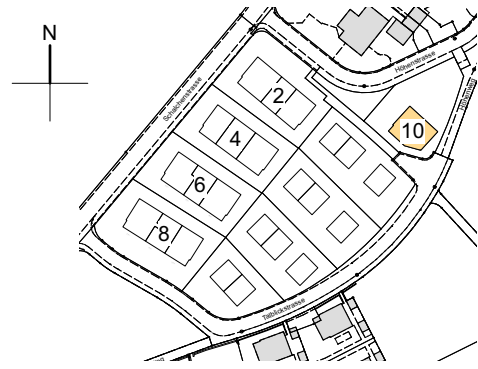




Überbauung Talblick  
Höhenstrasse 10C, 2.5 Zimmer  
8492 Wila  
Erdgeschoss  
Fläche Total: 62.3m<sup>2</sup>  
1:100

Stand: 14.03.2024

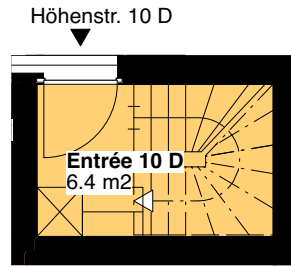
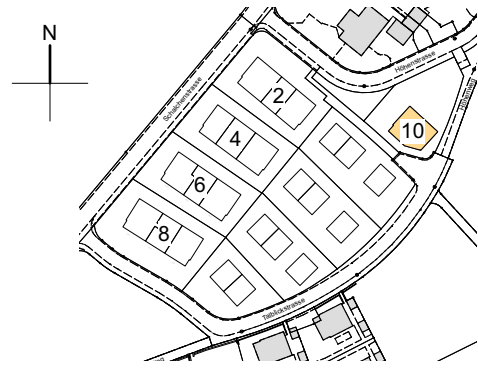
Änderungen vorbehalten



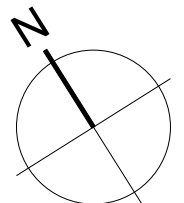
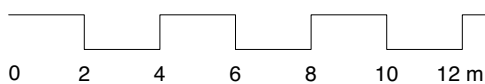
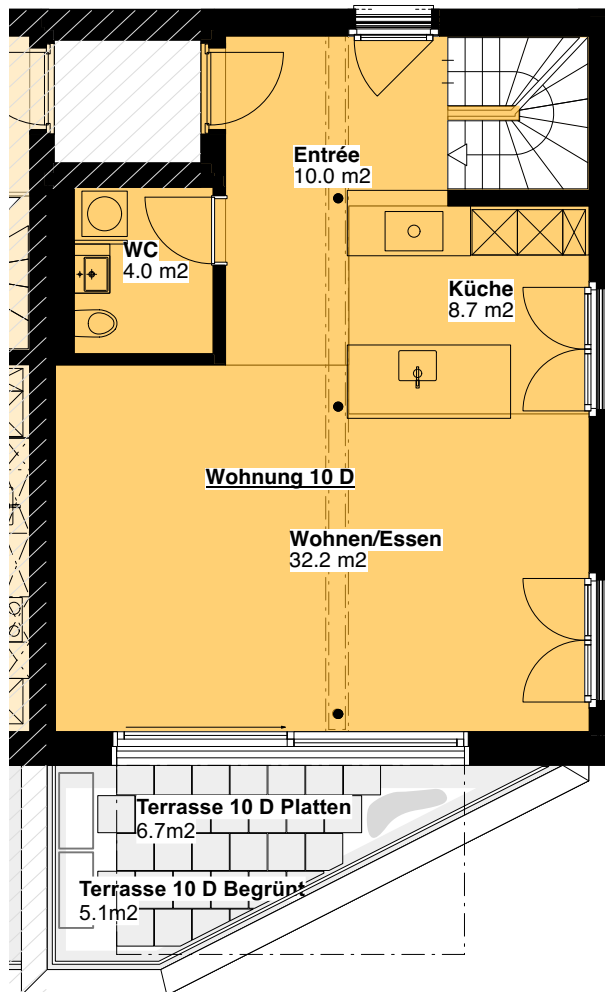
Überbauung Talblick  
Höhenstrasse 10D, 2.5 Zimmer  
8492 Wila  
Obergeschoss  
Fläche Total: 84.0m<sup>2</sup>  
1:100

Stand: 14.03.2024

Änderungen vorbehalten



Eingang



Überbauung Talblick  
Höhenstrasse 10D, 2.5 Zimmer  
8492 Wila  
Dachgeschoss  
Fläche Total: 84.0m<sup>2</sup>  
1:100

Stand: 14.03.2024

Änderungen vorbehalten

