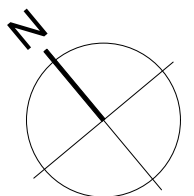
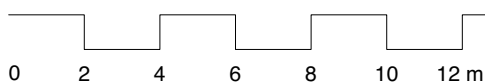
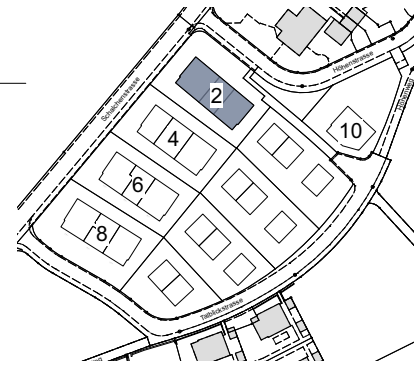


Überbauung Talblick Höhenstrasse 2A - 2F 8492 Wila Untergeschoss 1:200

Stand: 17.01.2023

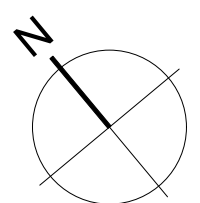
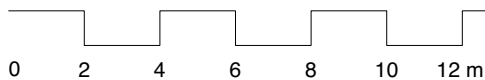
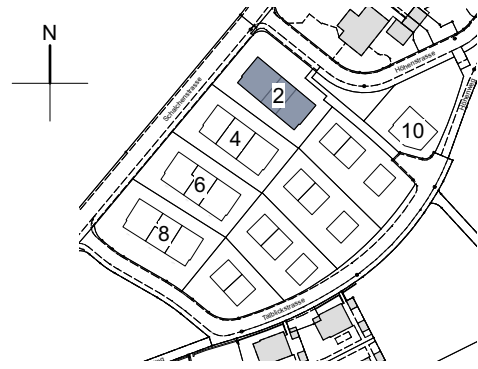
Änderungen vorbehalten



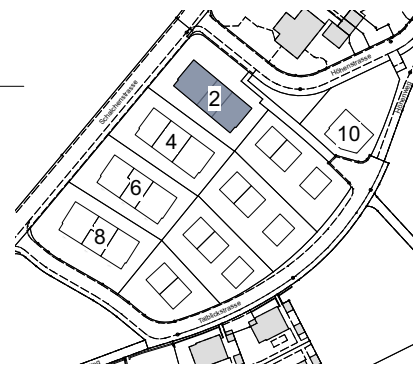
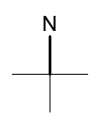
Überbauung Talblick Höhenstrasse 2A - 2F 8492 Wila Erdgeschoss / Umgebung 1:200

Stand: 25.05.2023

Änderungen vorbehalten



Überbauung Talblick Höhenstrasse 2A - 2F 8492 Wila Obergeschoss / Dachgeschoss 1:200

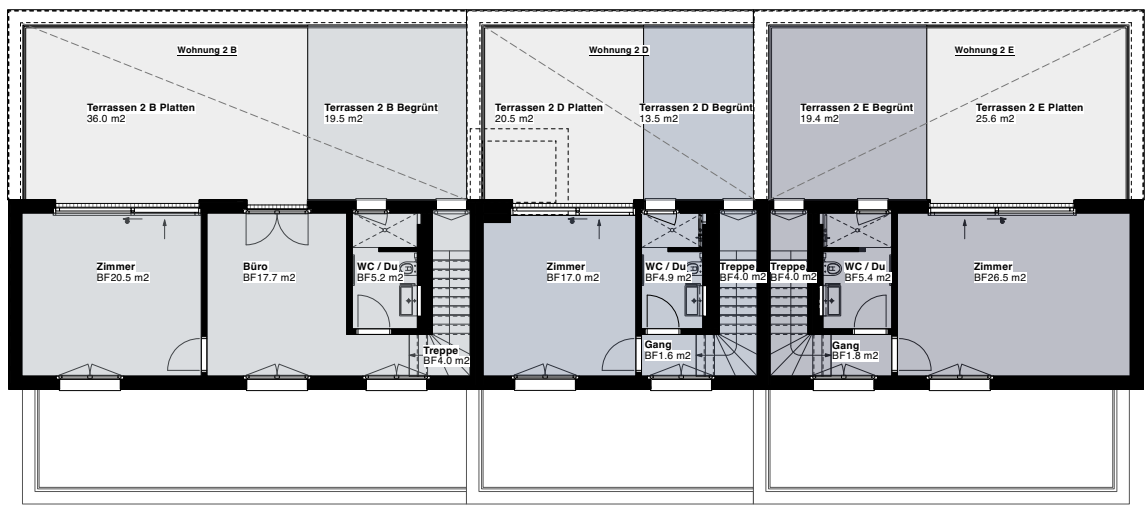


Stand: 25.05.2023

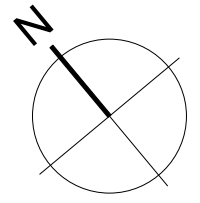
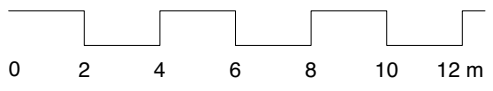
Änderungen vorbehalten



Obergeschoss



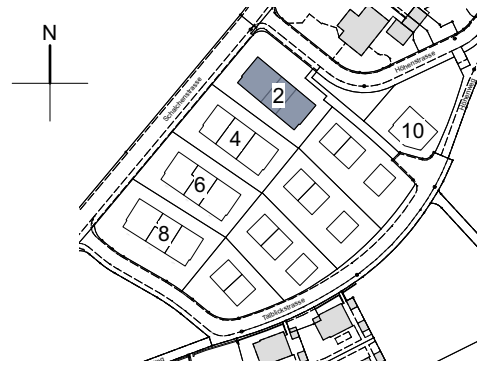
Dachgeschoss



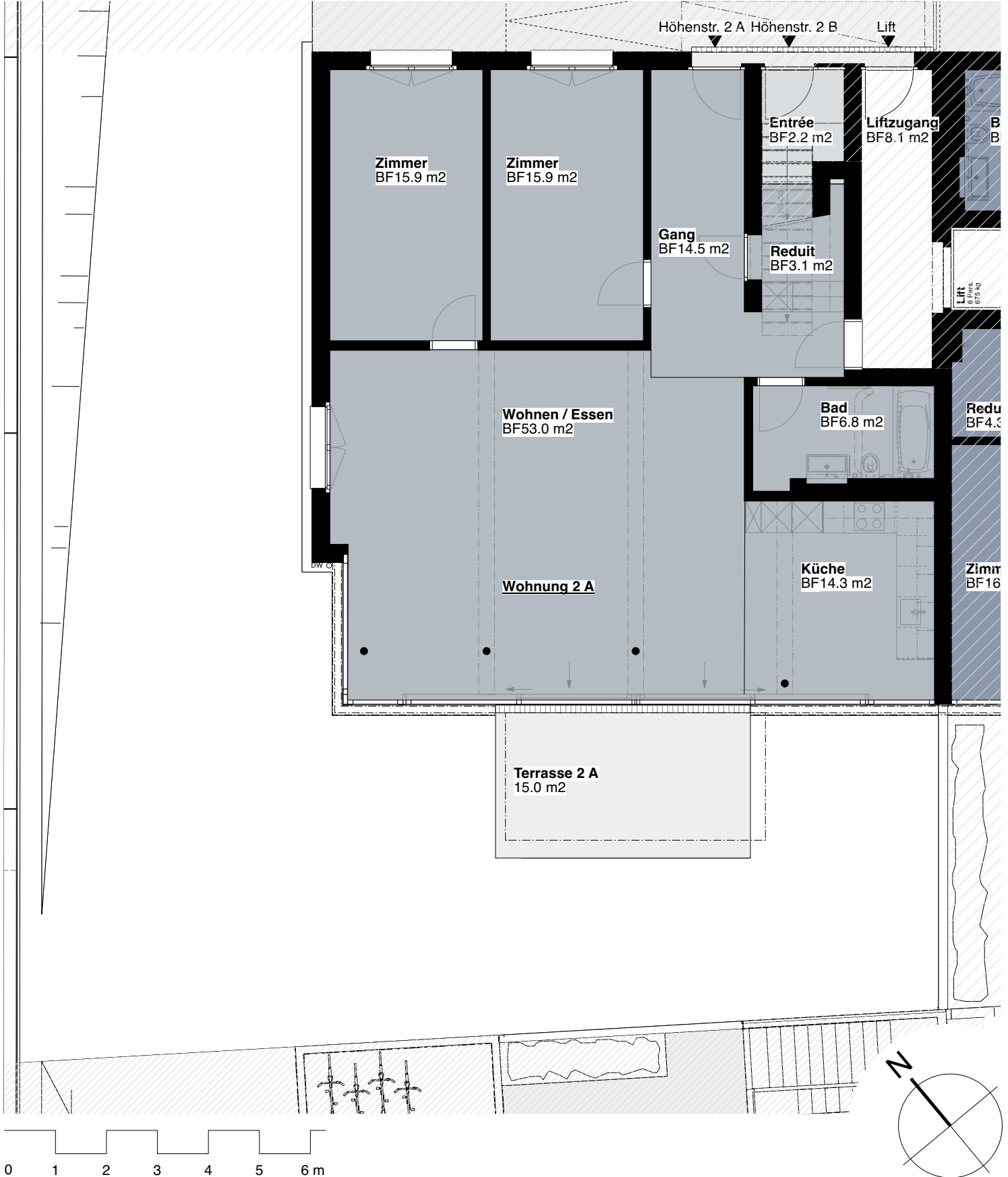
Überbauung Talblick
 Höhenstrasse 2A, 3.5 Zimmer
 8492 Wila
 Erdgeschoss
 Fläche Total: 123.5m²
 1:100

Stand: 25.05.2023

Änderungen vorbehalten



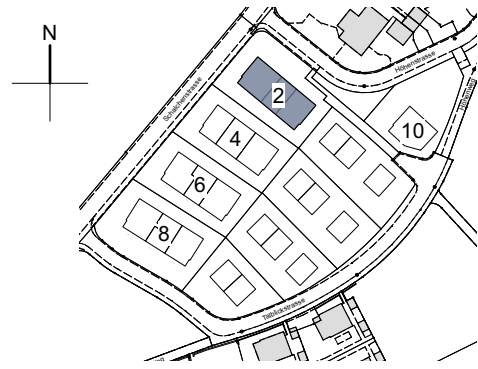
Architektengruppe
 4



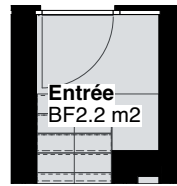
Überbauung Talblick
 Höhenstrasse 2B, 5.5 Zimmer
 8492 Wila
 Obergeschoss
 Fläche Total: 149.9m²
 1:100

Stand: 25.05.2023

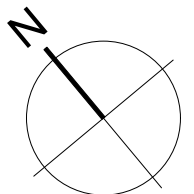
Änderungen vorbehalten



Höhenstr. 2 B



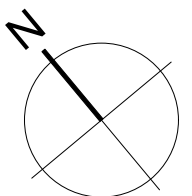
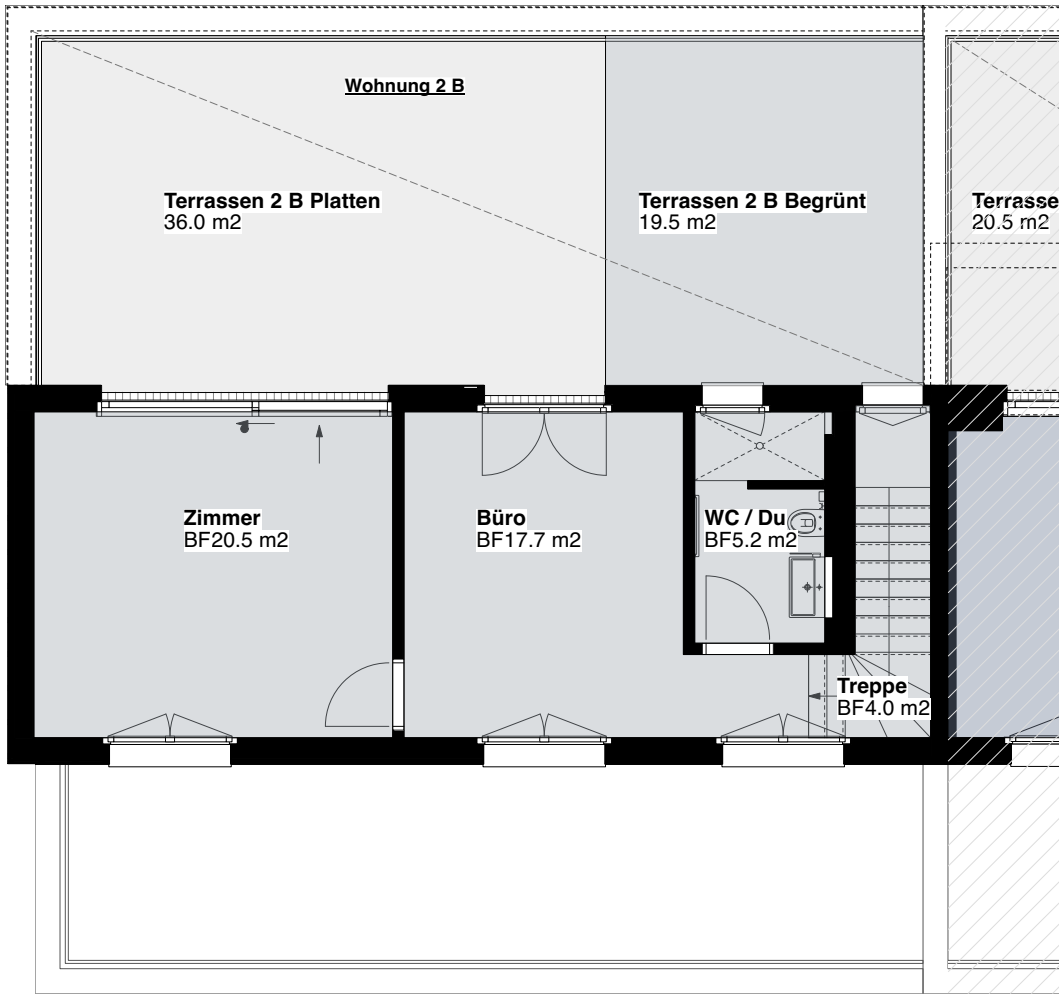
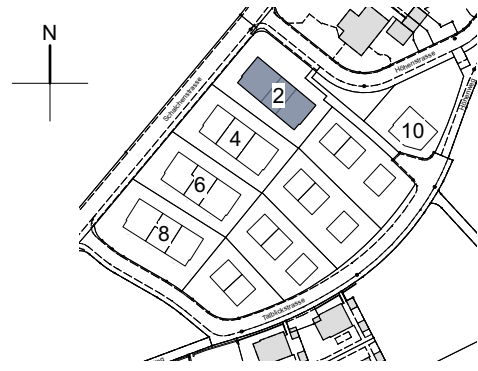
Eingang



Überbauung Talblick
Höhenstrasse 2B, 5.5 Zimmer
8492 Wila
Dachgeschoss
Fläche Total: 149.9m²
1:100

Stand: 25.05.2023

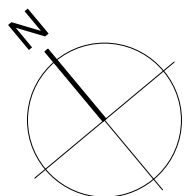
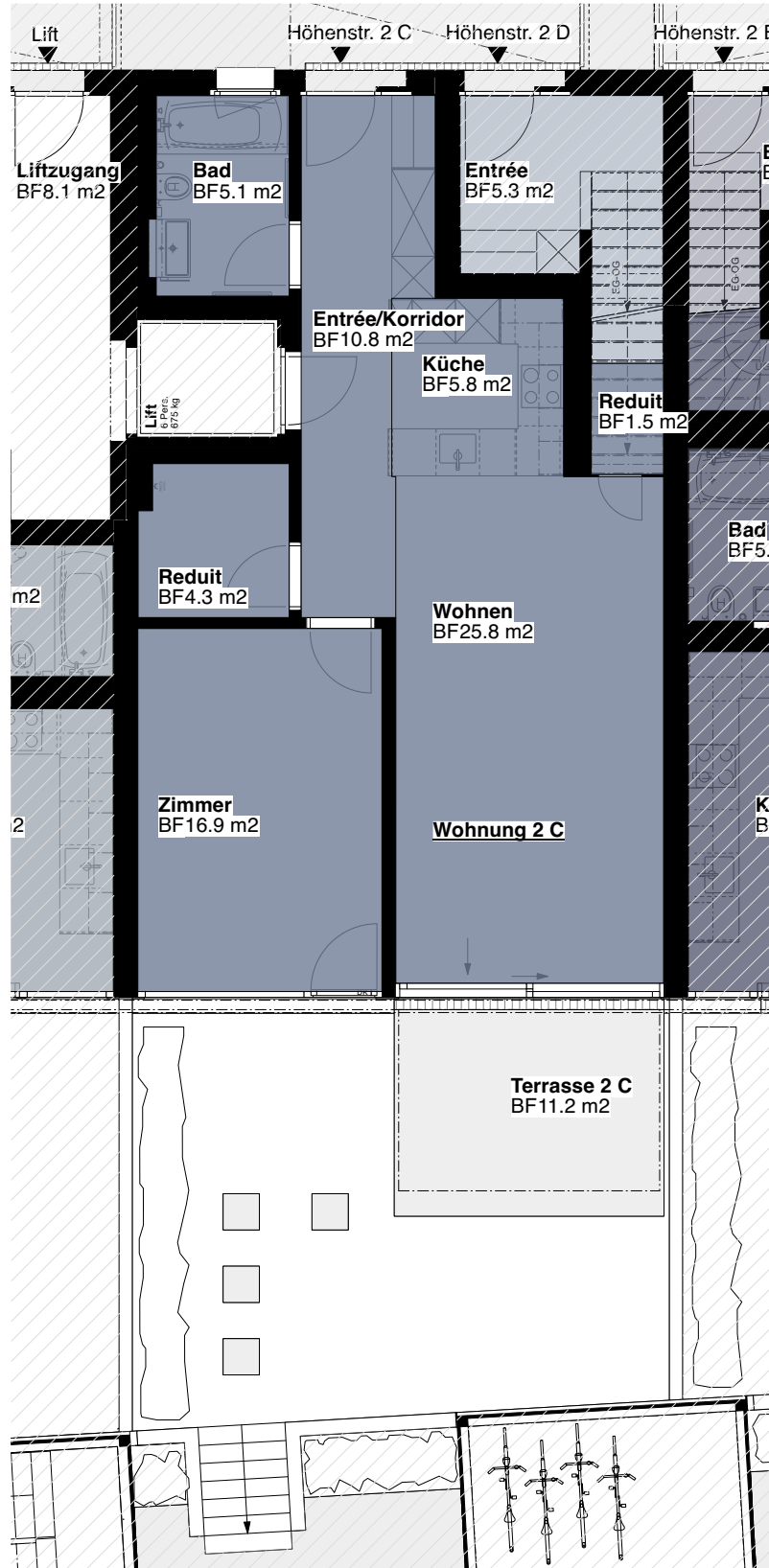
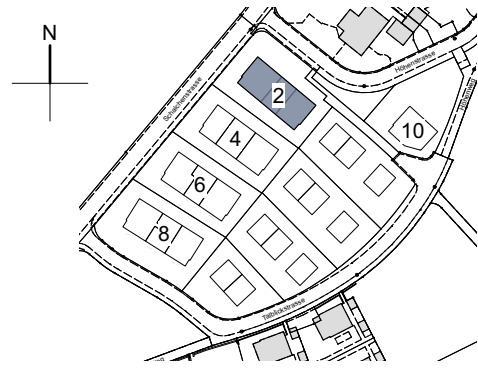
Änderungen vorbehalten



Überbauung Talblick
Höhenstrasse 2C, 2.5 Zimmer
8492 Wila
Erdgeschoss
Fläche Total: 70.2m²
1:100

Stand: 25.05.2023

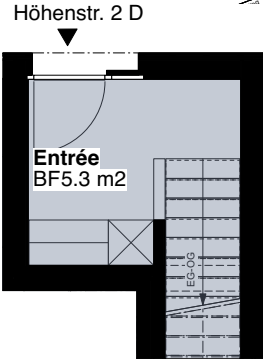
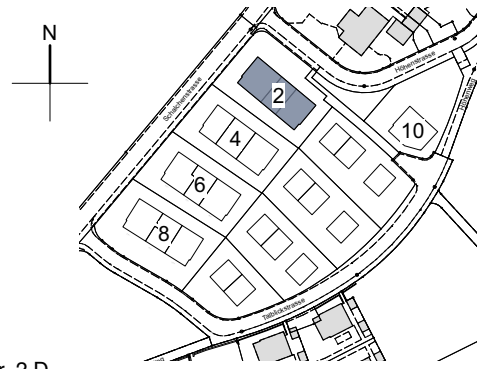
Änderungen vorbehalten



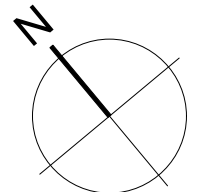
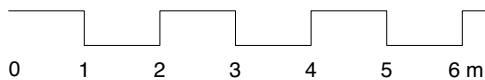
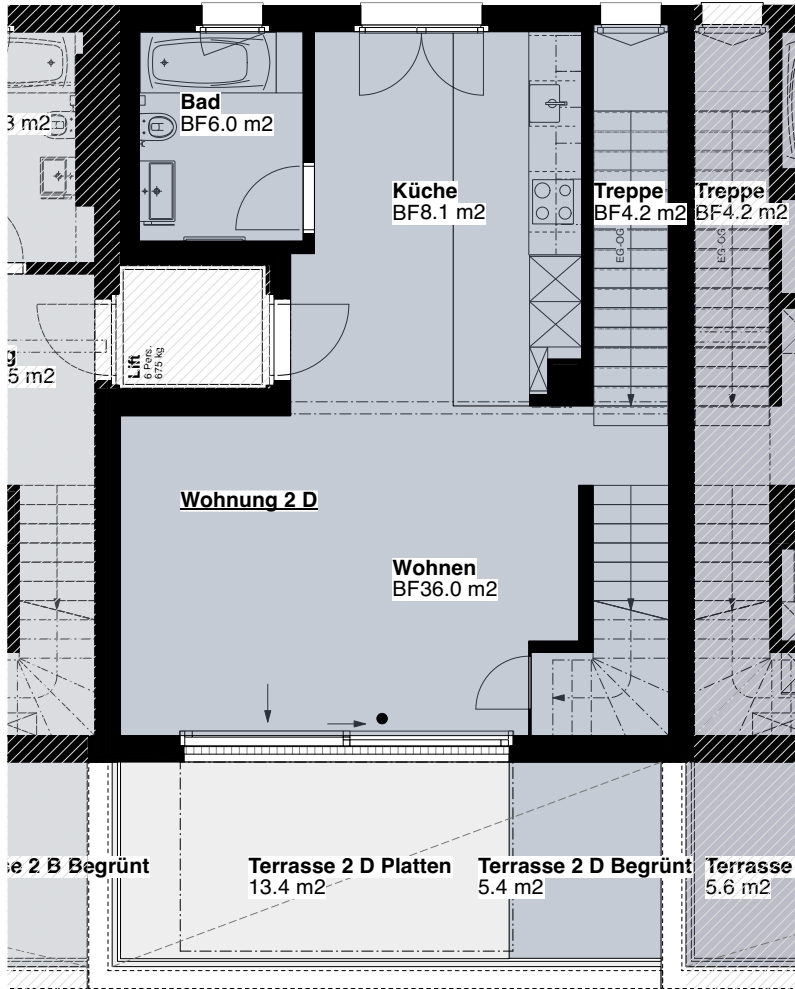
Überbauung Talblick
Höhenstrasse 2D, 2.5 Zimmer
8492 Wila
Obergeschoss
Fläche Total: 87.1m²
1:100

Stand: 25.05.2023

Änderungen vorbehalten



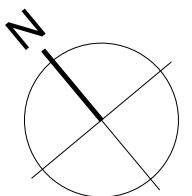
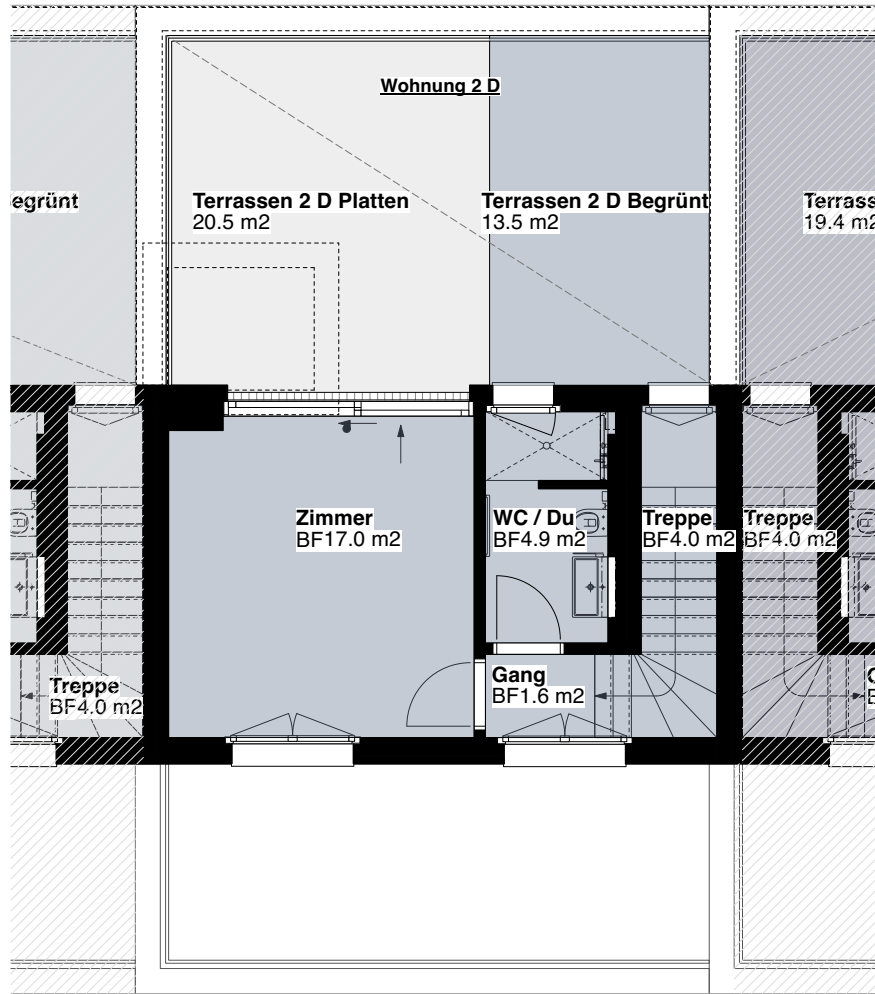
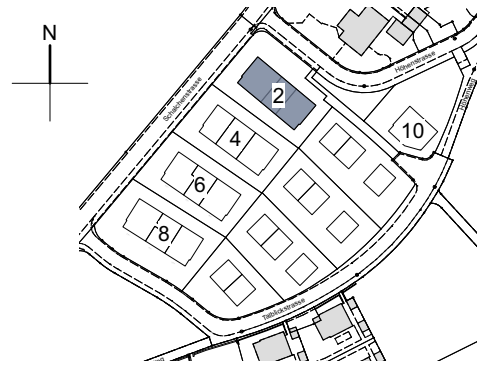
Eingang



Überbauung Talblick
Höhenstrasse 2D, 2.5 Zimmer
8492 Wila
Dachgeschoss
Fläche Total: 87.1m²
1:100

Stand: 25.05.2023

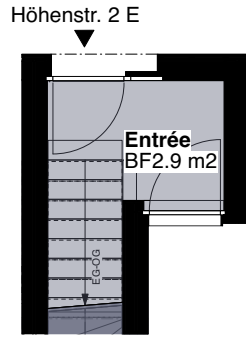
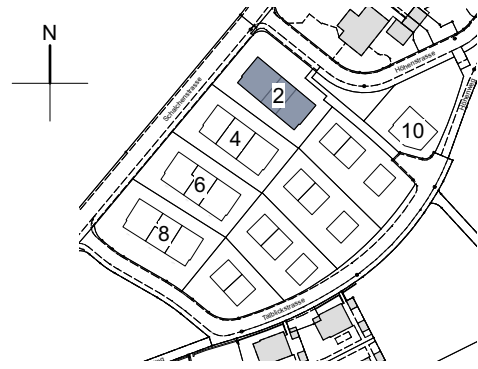
Änderungen vorbehalten



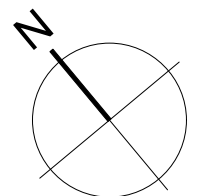
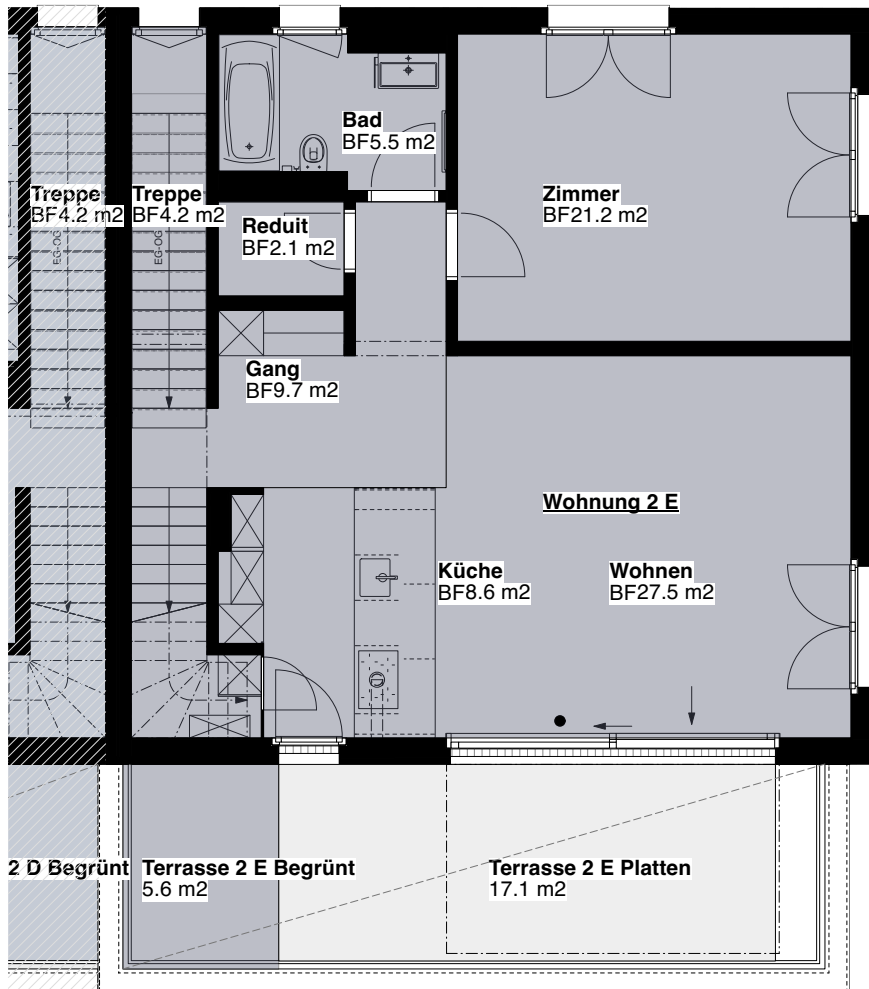
Überbauung Talblick
 Höhenstrasse 2E, 3.5 Zimmer
 8492 Wila
 Obergeschoss
 Fläche Total: 119.4m²
 1:100

Stand: 25.05.2023

Änderungen vorbehalten



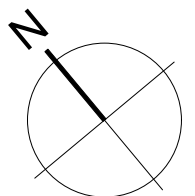
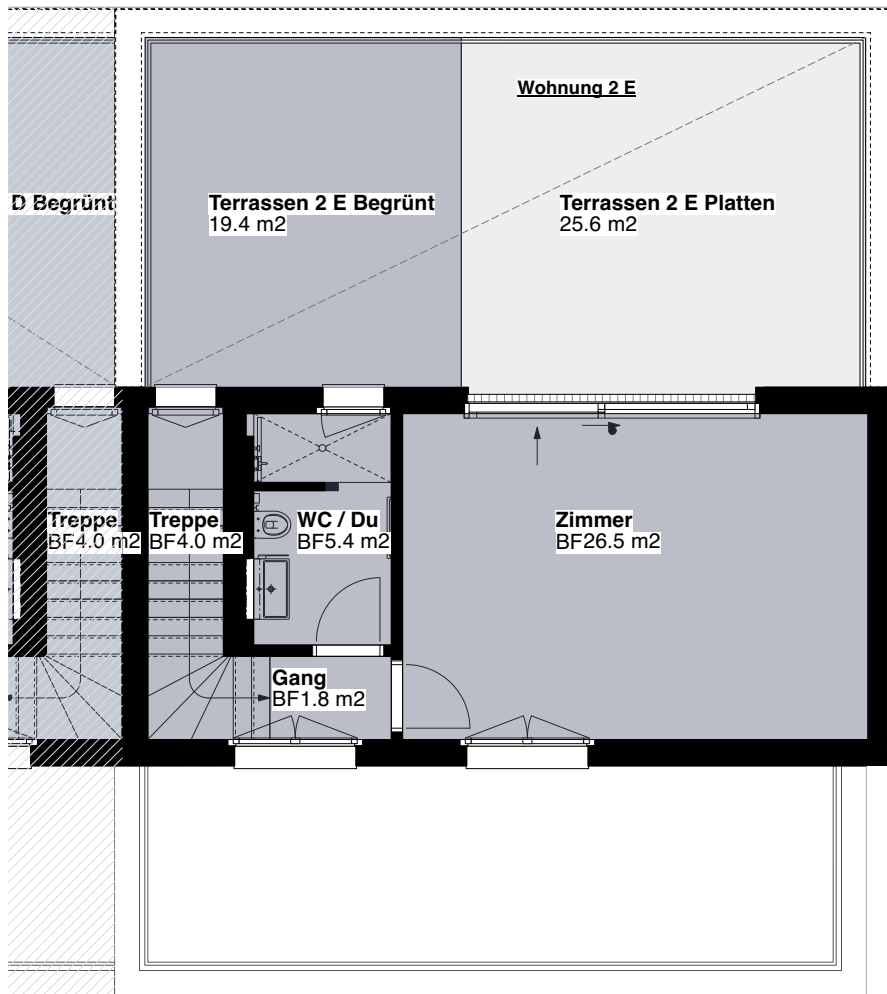
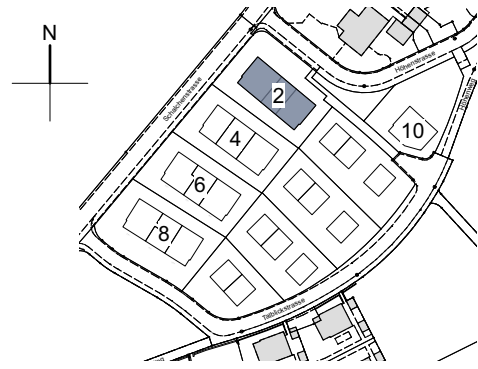
Eingang



Überbauung Talblick
Höhenstrasse 2E, 3.5 Zimmer
8492 Wila
Dachgeschoss
Fläche Total: 119.4m²
1:100

Stand: 25.05.2023

Änderungen vorbehalten



Überbauung Talblick
Höhenstrasse 2F, 3.5 Zimmer
8492 Wila
Erdgeschoss
Fläche Total: 98.7m²
1:100

Stand: 25.05.2023

Änderungen vorbehalten

