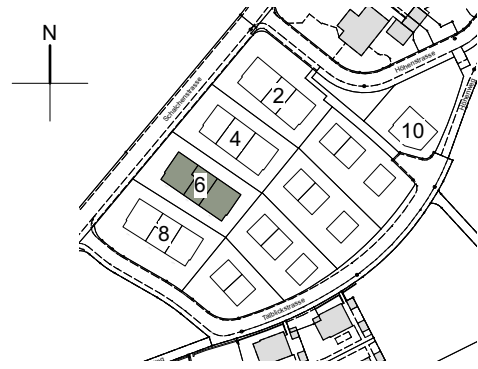
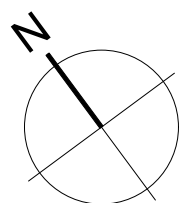


Überbauung Talblick
 Höhenstrasse 6A - 6F
 8492 Wila
 Untergeschoss
 1:200

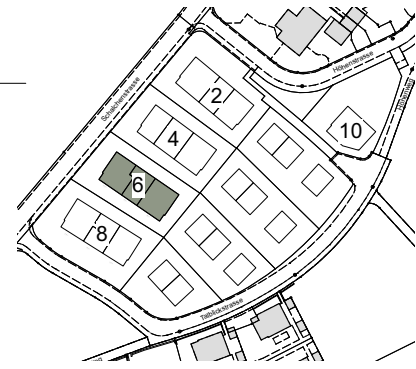


Stand: 25.05.2023

Änderungen vorbehalten

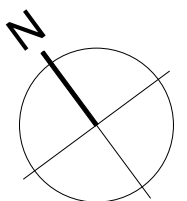
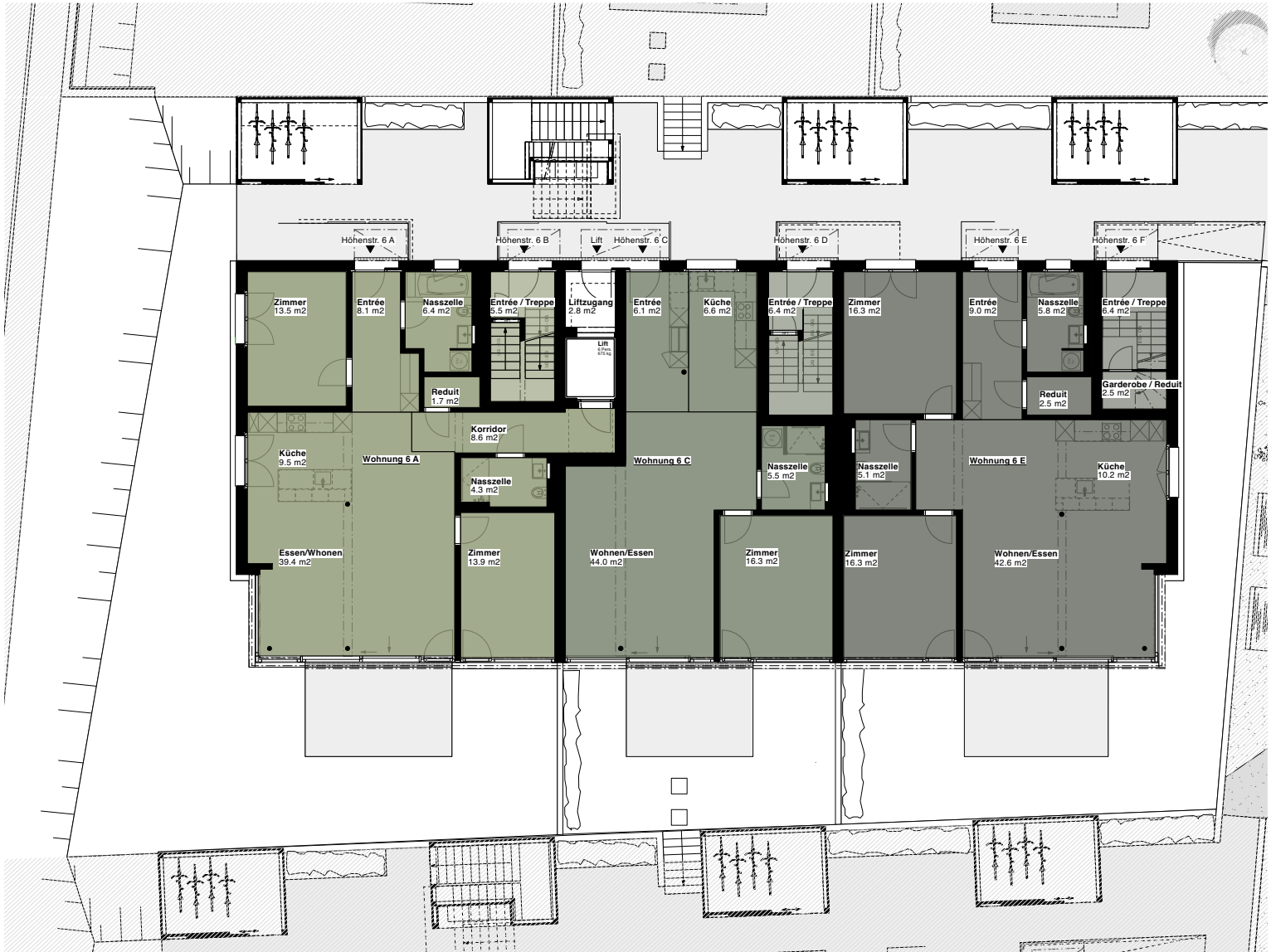


Überbauung Talblick
 Höhenstrasse 6A - 6F
 8492 Wila
 Erdgeschoss / Umgebung
 1:200

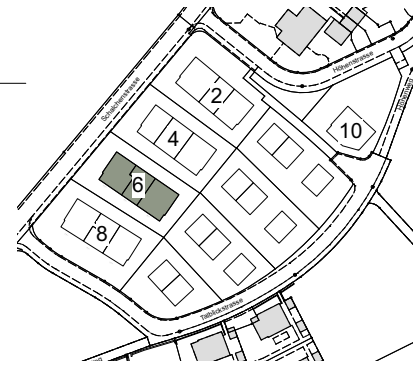


Stand: 25.05.2023

Änderungen vorbehalten



Überbauung Talblick Höhenstrasse 6A - 6F 8492 Wila Obergeschoss / Dachgeschoss 1:200



Stand: 25.05.2023

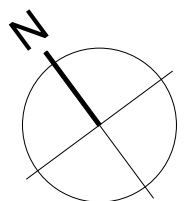
Änderungen vorbehalten



Obergeschoss



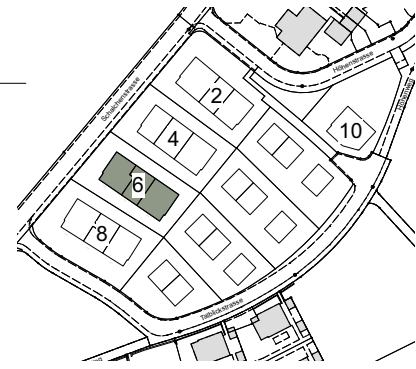
Dachgeschoss



Überbauung Talblick
 Höhenstrasse 6A, 3.5 Zimmer
 8492 Wila
 Erdgeschoss
 Fläche Total: 105.4m²
 1:100

Stand: 25.05.2023

Änderungen vorbehalten



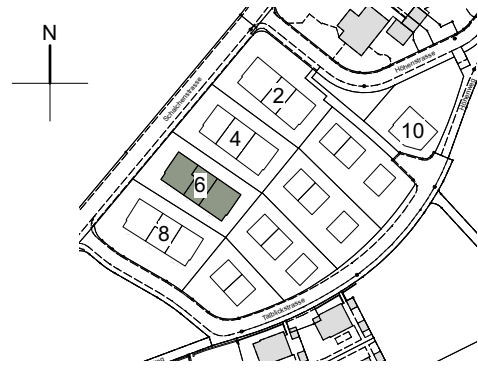
Architektengruppe
4



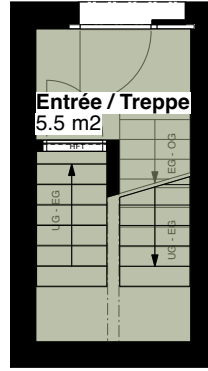
Überbauung Talblick
 Höhenstrasse 6B, 4.5 Zimmer
 8492 Wila
 Obergeschoss
 Fläche Total: 125.9m²
 1:100

Stand: 25.05.2023

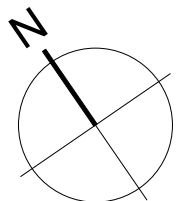
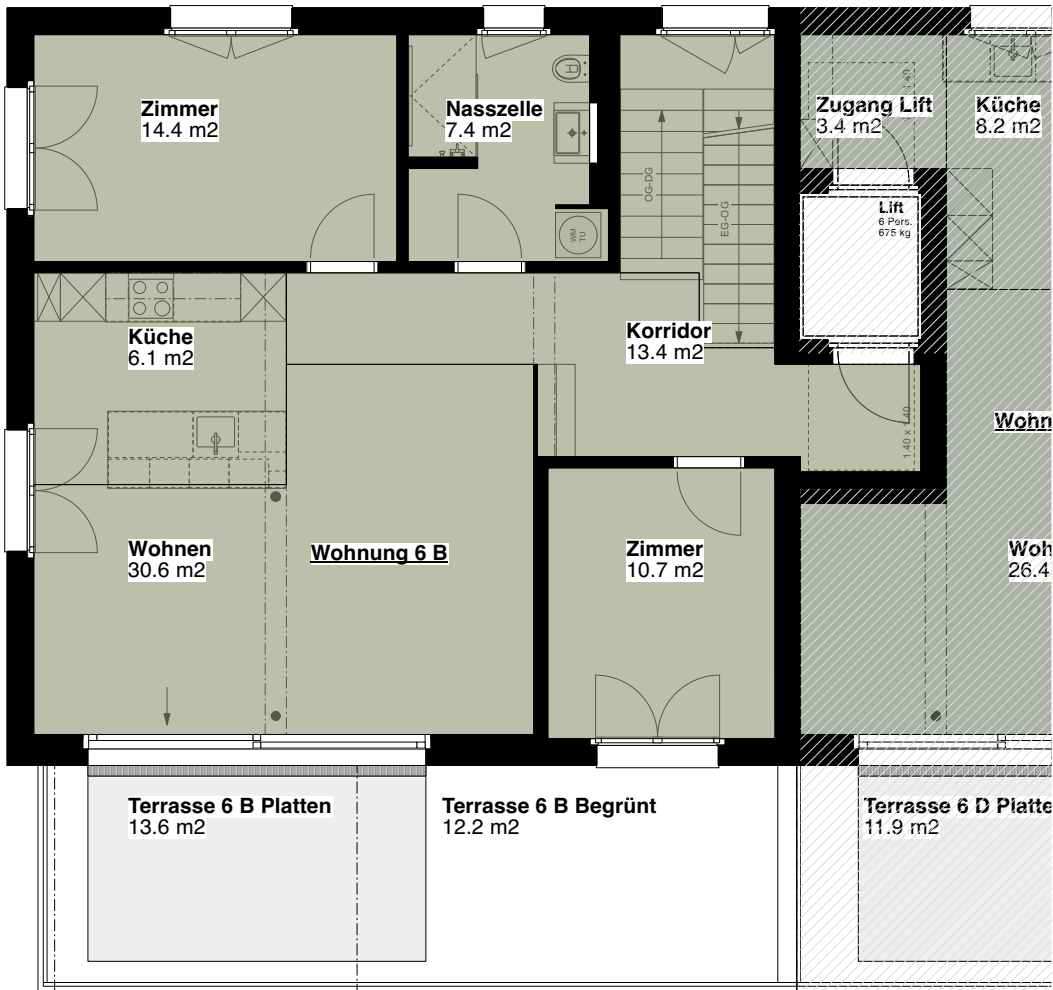
Änderungen vorbehalten



Höhenstr. 6 B



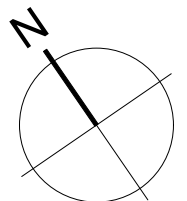
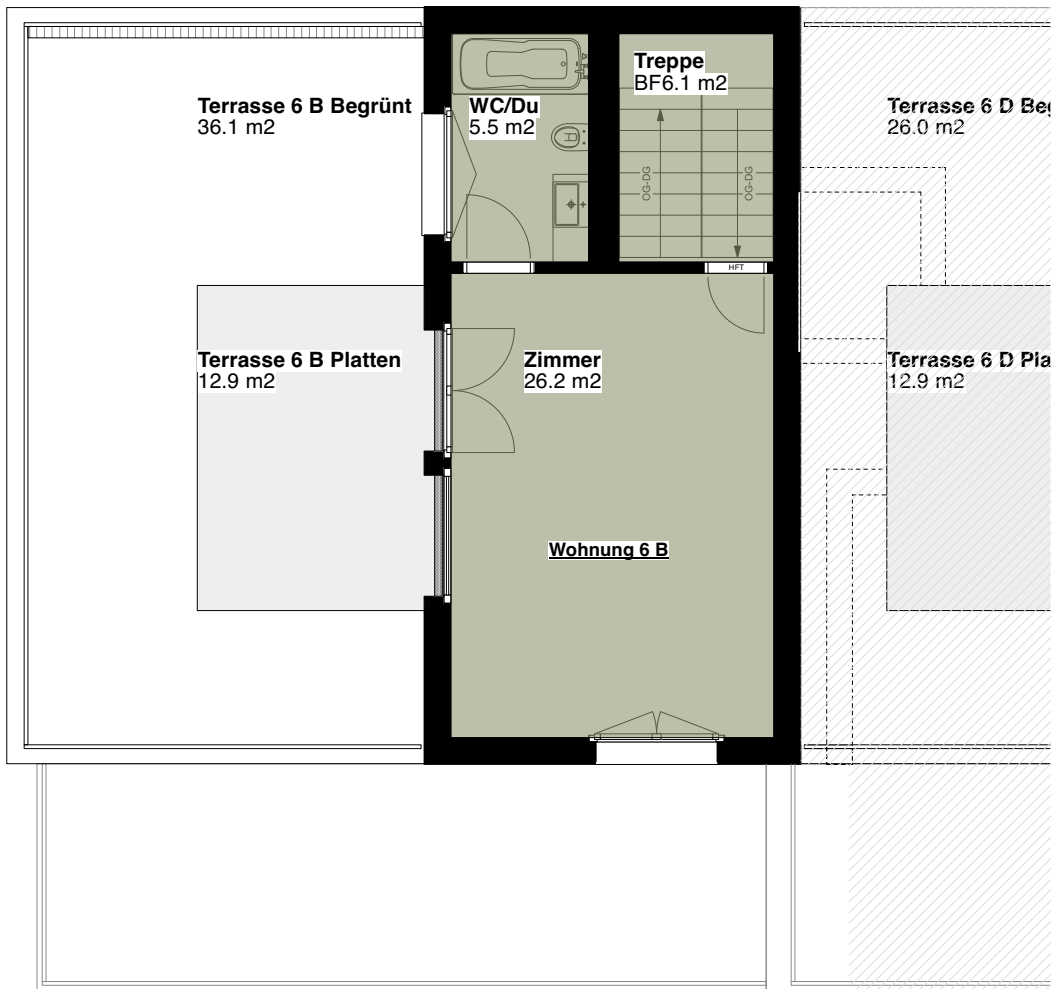
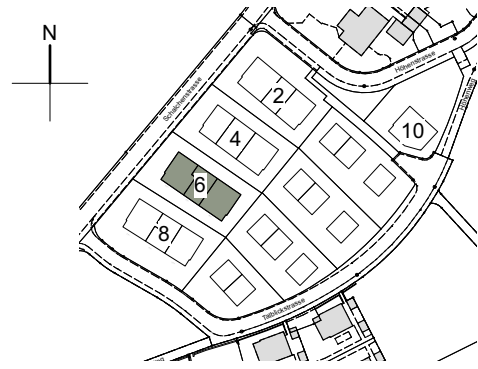
Eingang



Überbauung Talblick
Höhenstrasse 6B, 4.5 Zimmer
8492 Wila
Dachgeschoss
Fläche Total: 125.9m²
1:100

Stand: 25.05.2023

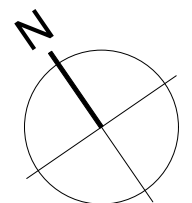
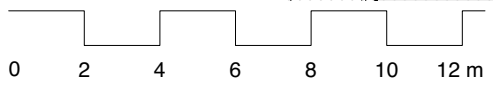
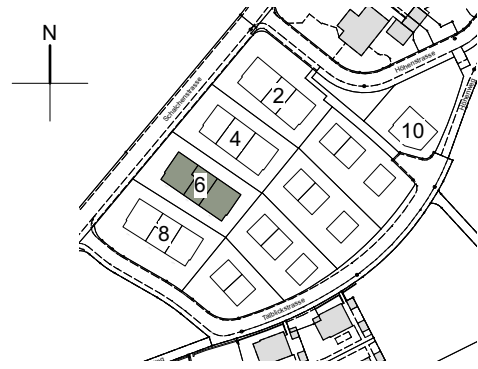
Änderungen vorbehalten



Überbauung Talblick
Höhenstrasse 6C, 2.5 Zimmer
8492 Wila
Erdgeschoss
Fläche Total: 78.5m²
1:100

Stand: 25.05.2023

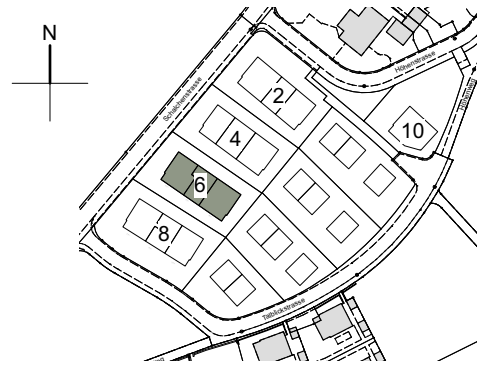
Änderungen vorbehalten



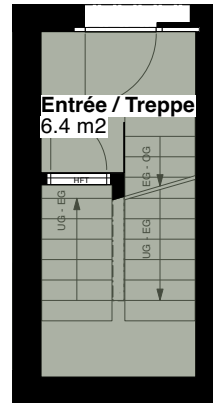
Überbauung Talblick
 Höhenstrasse 6D, 3.5 Zimmer
 8492 Wila
 Obergeschoss
 Fläche Total: 101.7m²
 1:100

Stand: 25.05.2023

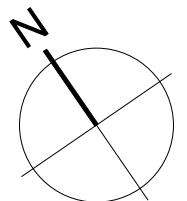
Änderungen vorbehalten



Höhenstr. 6 D



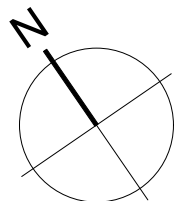
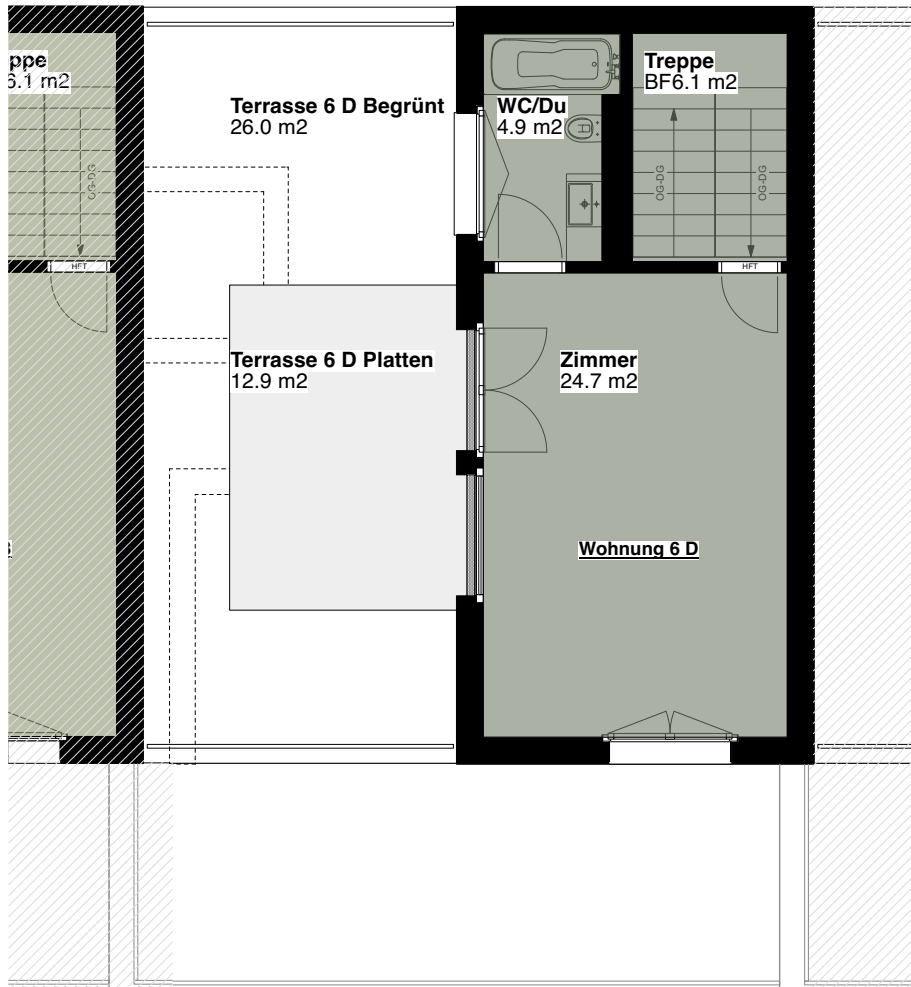
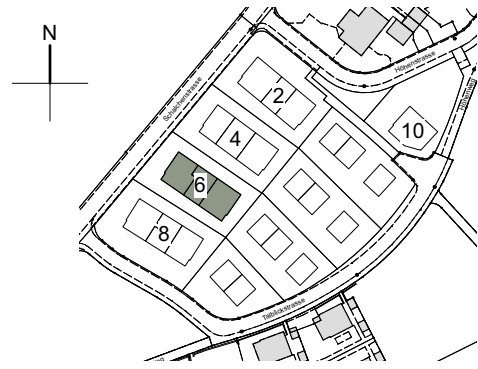
Eingang



Überbauung Talblick
Höhenstrasse 6D, 3.5 Zimmer
8492 Wila
Dachgeschoss
Fläche Total: 101.7m²
1:100

Stand: 25.05.2023

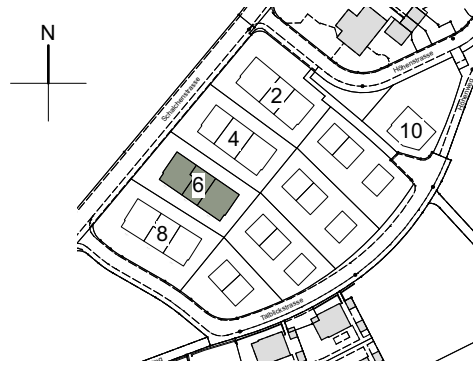
Änderungen vorbehalten



Überbauung Talblick
Höhenstrasse 6E, 3.5 Zimmer
8492 Wila
Erdgeschoss
Fläche Total: 107.8m²
1:100

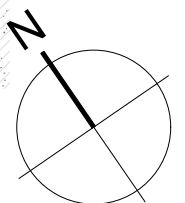
Stand: 25.05.2023

Änderungen vorbehalten



Architektengruppe

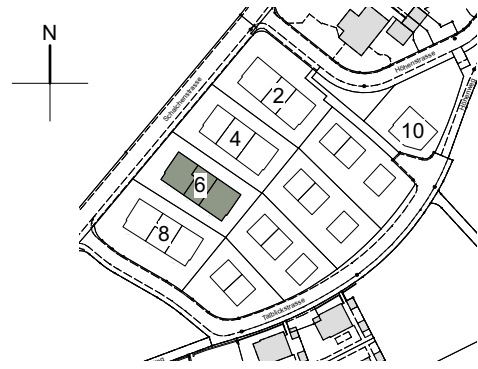
4



Überbauung Talblick
 Höhenstrasse 6F, 4.5 Zimmer
 8492 Wila
 Obergeschoss
 Fläche Total: 130.7m²
 1:100

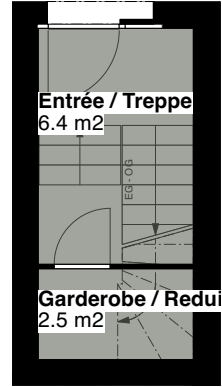
Stand: 25.05.2023

Änderungen vorbehalten

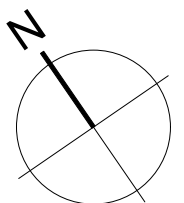
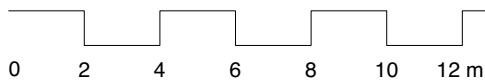
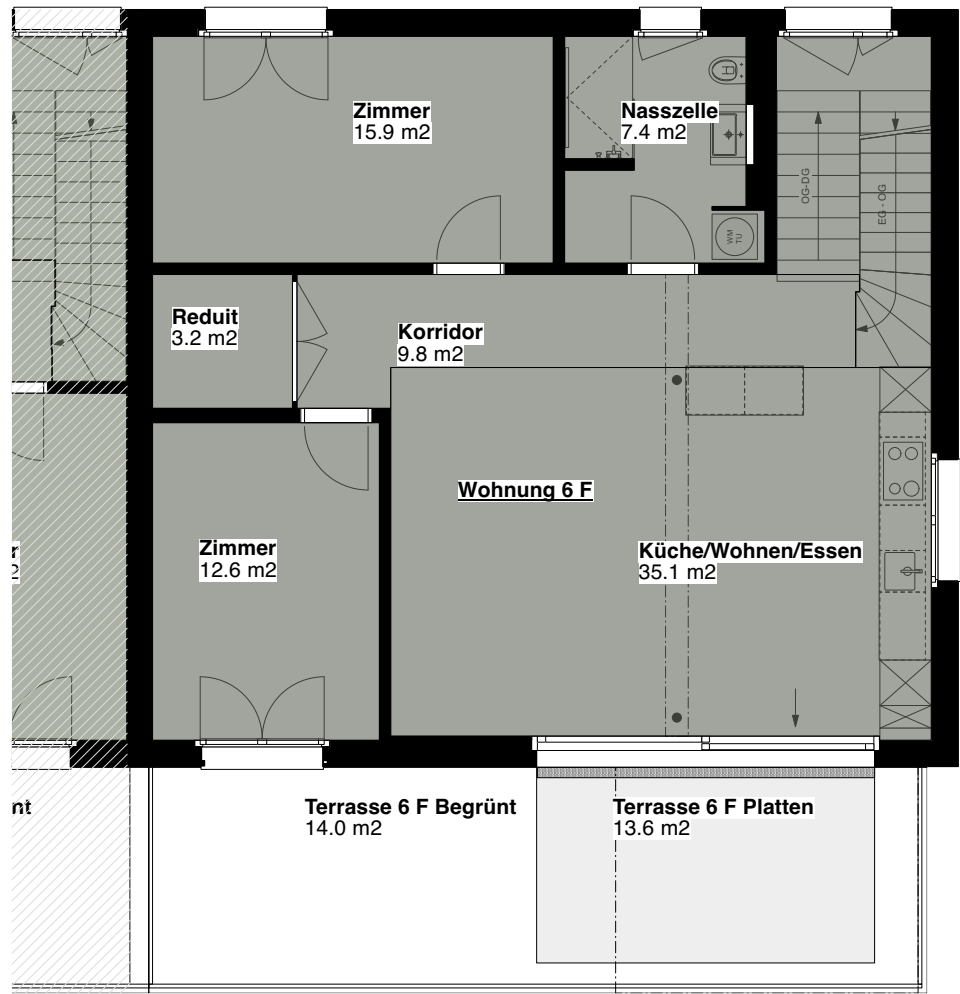


Höhenstr. 6 F

Architektengruppe
 4



Eingang



Überbauung Talblick
Höhenstrasse 6F, 4.5 Zimmer
8492 Wila
Dachgeschoss
Fläche Total: 130.7m²
1:100

Stand: 25.05.2023

Änderungen vorbehalten

