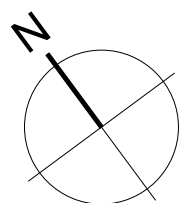
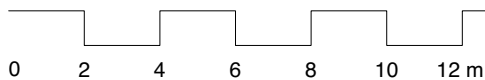
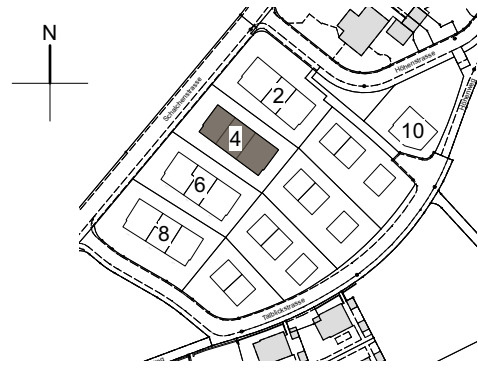


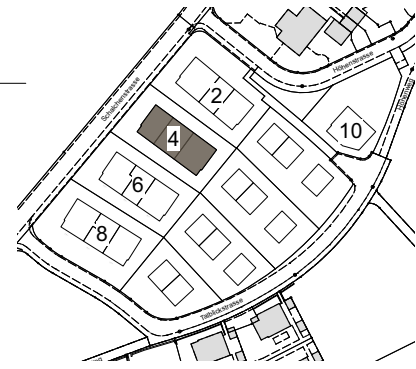
Überbauung Talblick Höhenstrasse 4A - 4F 8492 Wila Untergeschoss 1:200

Stand: 14.12.2022

Änderungen vorbehalten

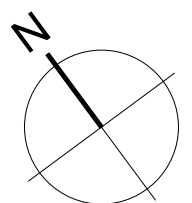


Überbauung Talblick
 Höhenstrasse 4A - 4F
 8492 Wila
 Erdgeschoss / Umgebung
 1:200

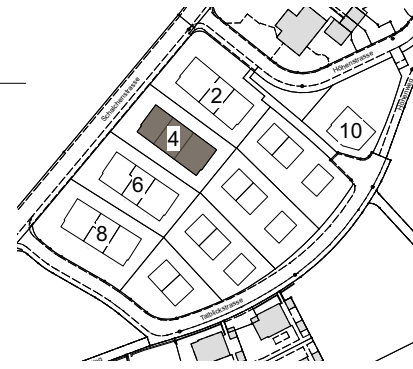


Stand: 14.12.2022

Änderungen vorbehalten

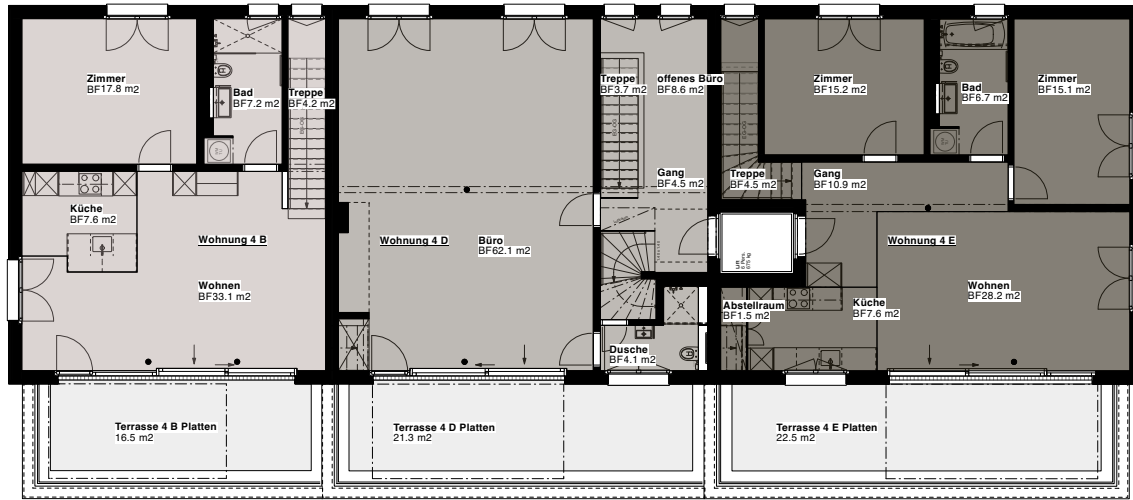


Überbauung Talblick Höhenstrasse 4A - 4F 8492 Wila Obergeschoss / Dachgeschoss 1:200

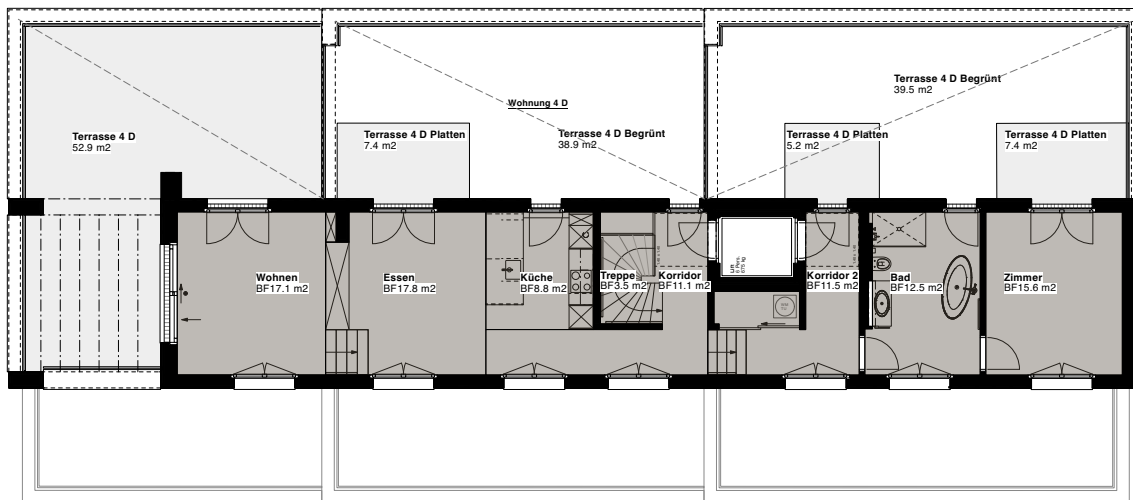


Stand: 25.05.2023

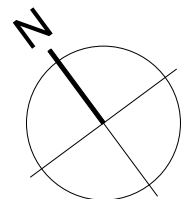
Änderungen vorbehalten



Obergeschoss



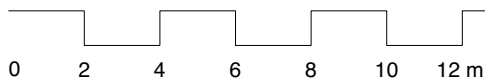
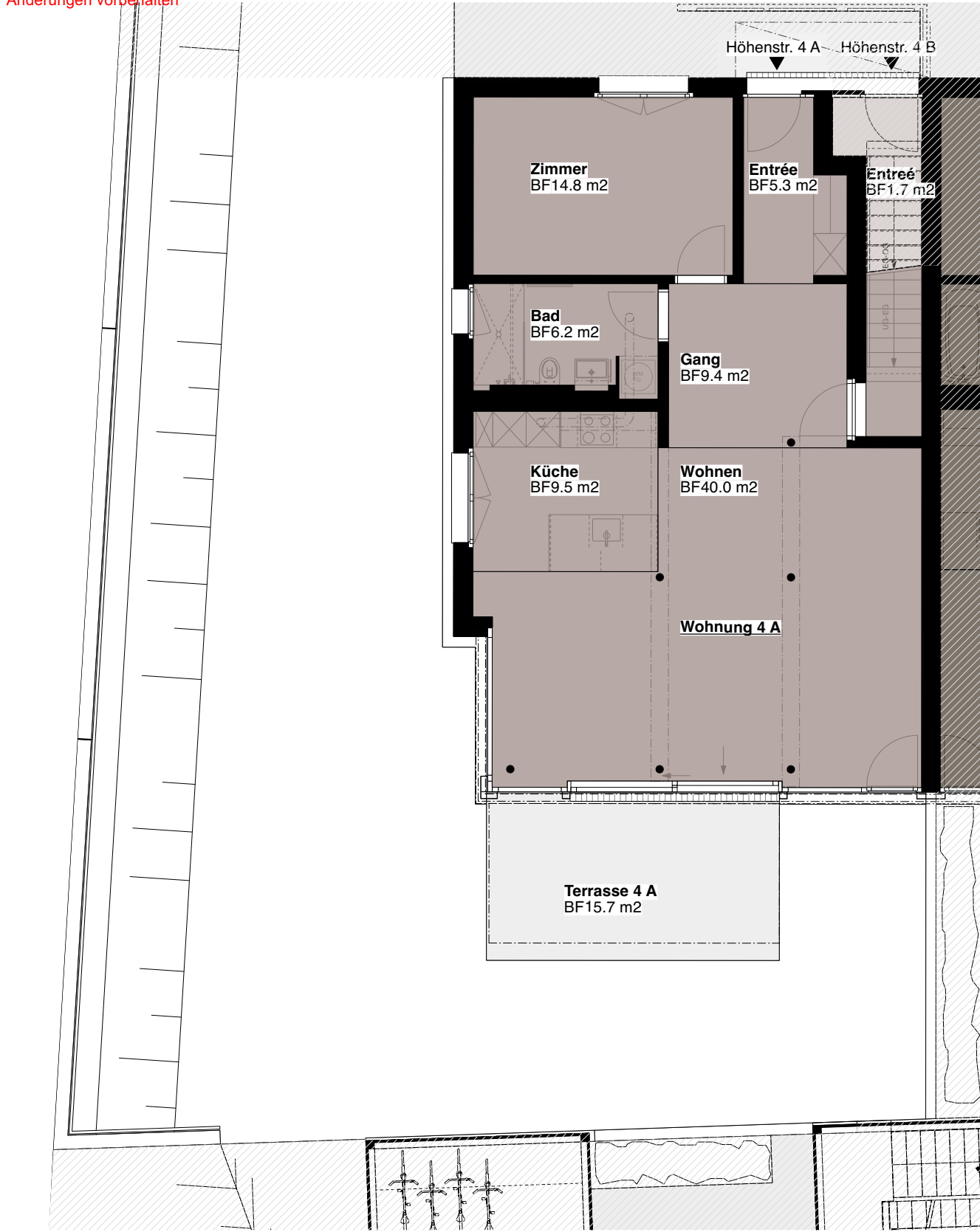
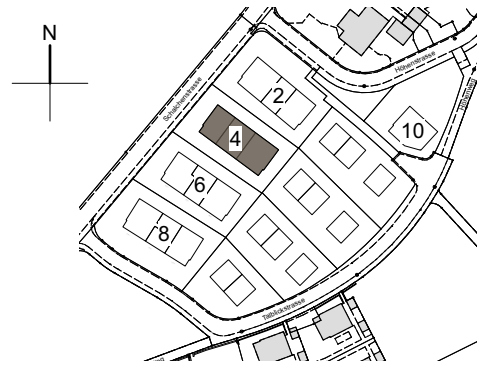
Dachgeschoss



Überbauung Talblick
Höhenstrasse 4A, 2.5 Zimmer
8492 Wila
Erdgeschoss
Fläche Total: 85.2m²
1:100

Stand: 14.12.2022

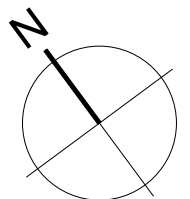
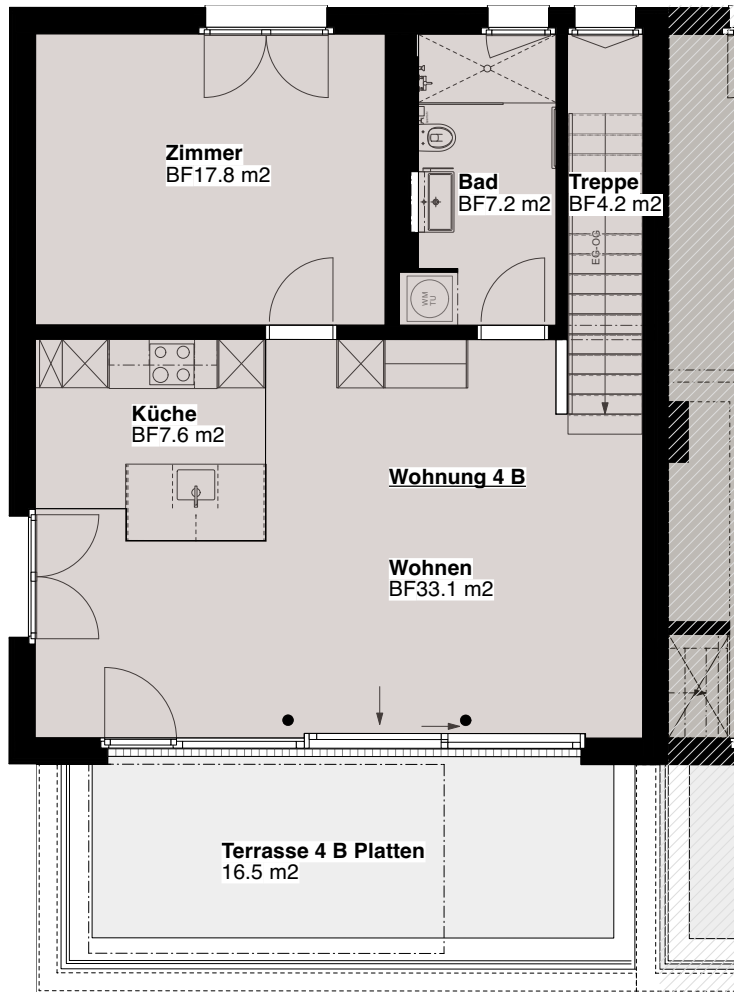
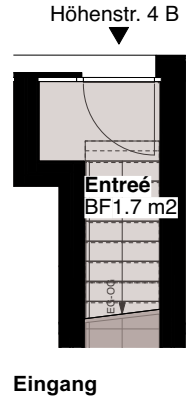
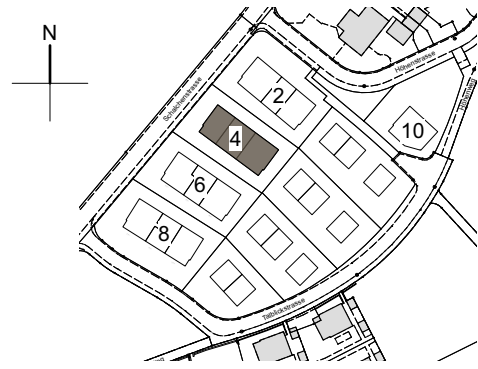
Änderungen vorbehalten



Überbauung Talblick
Höhenstrasse 4B, 2.5 Zimmer
8492 Wila
Obergeschoss
Fläche Total: 71.6m²
1:100

Stand: 25.05.2023

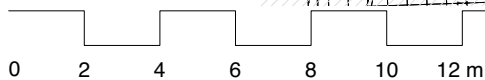
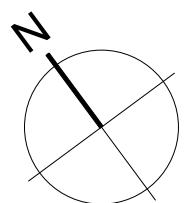
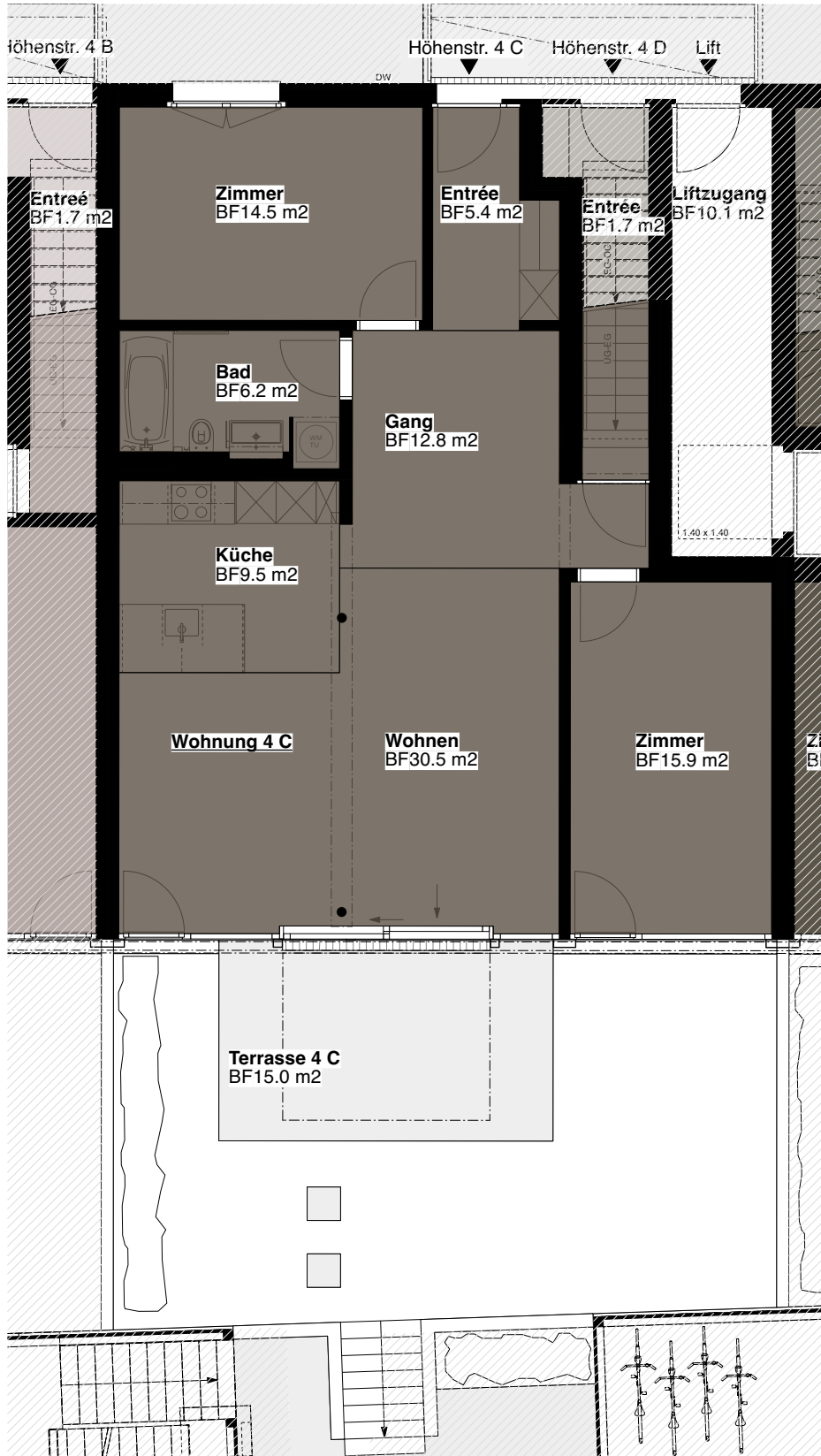
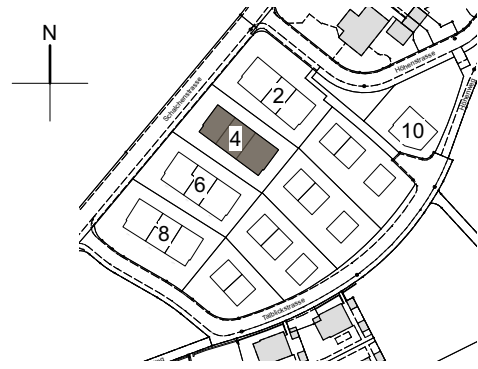
Änderungen vorbehalten



Überbauung Talblick
Höhenstrasse 4C, 3.5 Zimmer
8492 Wila
Erdgeschoss
Fläche Total: 94.8m²
1:100

Stand: 14.12.2022

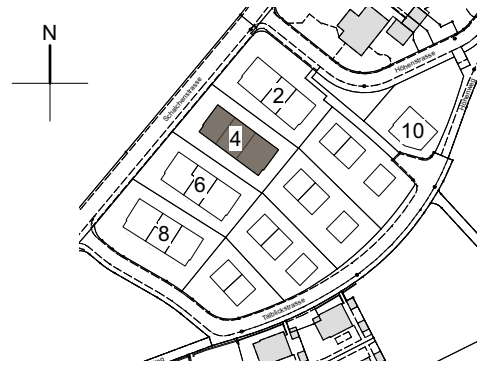
Änderungen vorbehalten



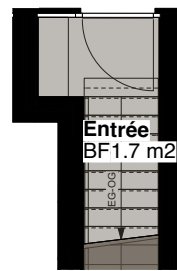
Überbauung Talblick
 Höhenstrasse 4D, 4.5 Zimmer
 8492 Wila
 Obergeschoss
 Fläche Total: 182.6m²
 1:100

Stand: 25.05.2023

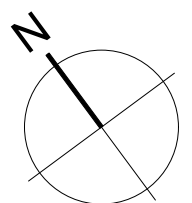
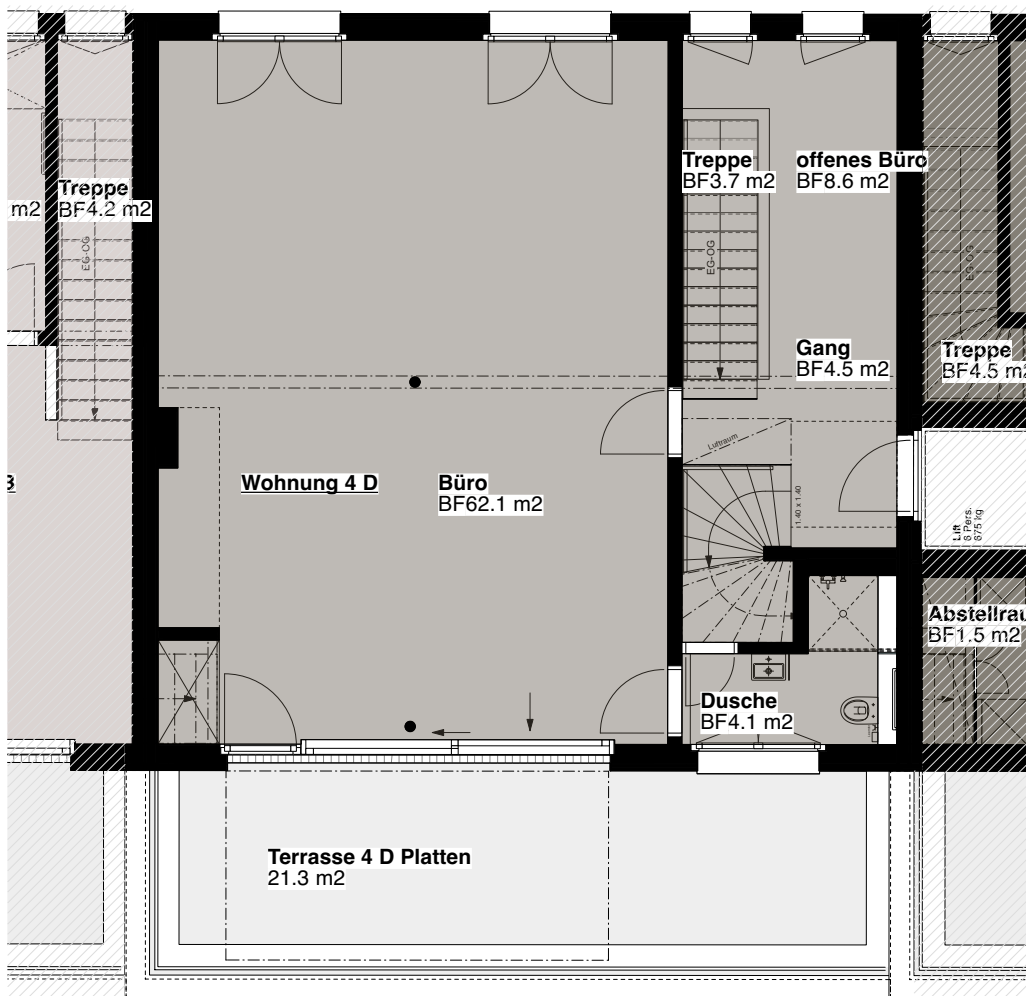
Änderungen vorbehalten



Höhenstr. 4 D



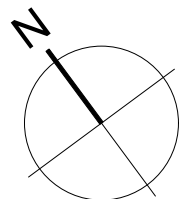
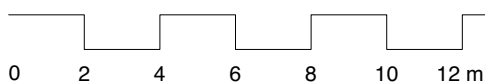
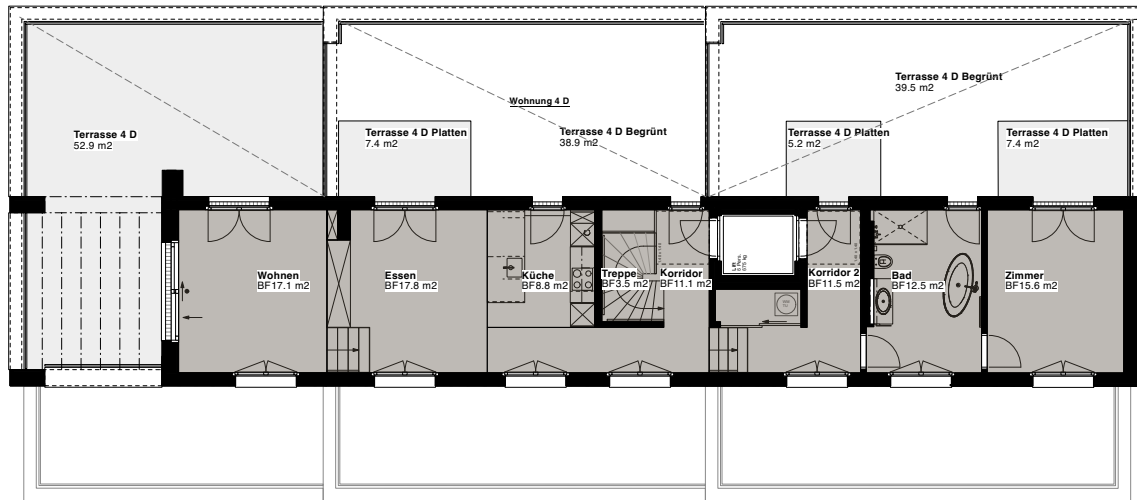
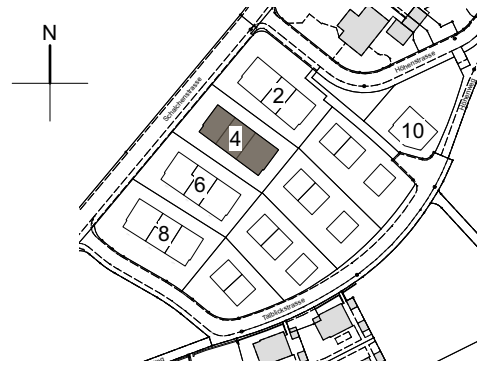
Eingang



Überbauung Talblick
Höhenstrasse 4D, 4.5 Zimmer
8492 Wila
Dachgeschoss
Fläche Total: 182.6m²
1:200

Stand: 25.05.2023

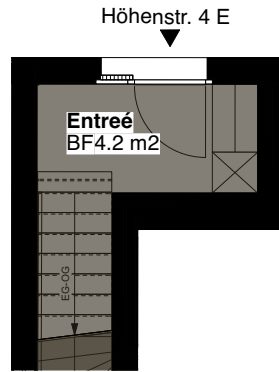
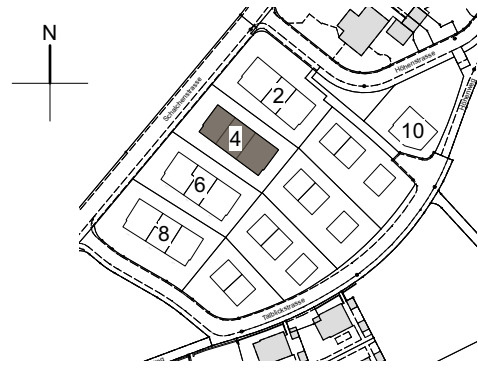
Änderungen vorbehalten



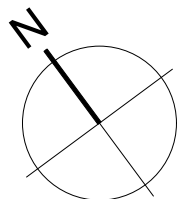
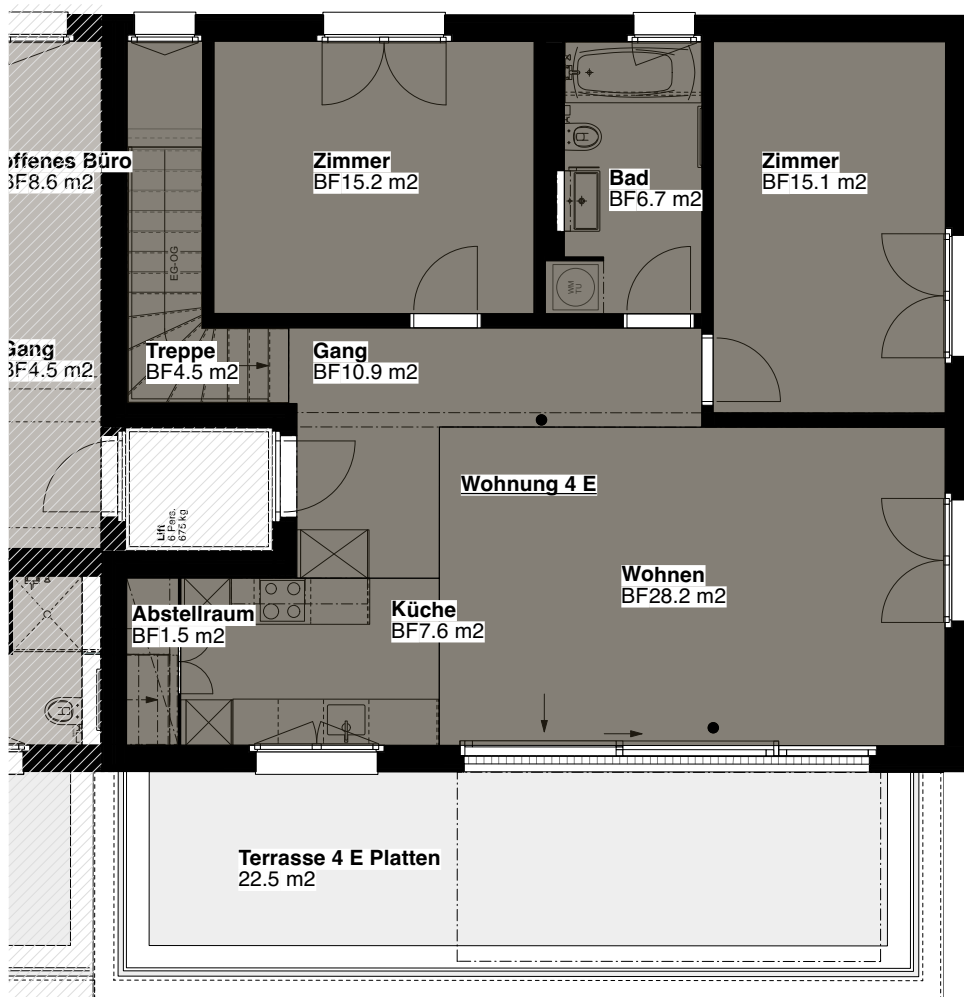
Überbauung Talblick
Höhenstrasse 4E, 3.5 Zimmer
8492 Wila
Obergeschoss
Fläche Total: 93.9m²
1:100

Stand: 25.05.2023

Änderungen vorbehalten



Eingang



Überbauung Talblick
Höhenstrasse 4F, 3.5 Zimmer
8492 Wila
Erdgeschoss
Fläche Total: 110.4m²
1:100

Stand: 14.12.2022

Änderungen vorbehalten

